

# HPLC Application

ID No.: 19279

## Ranitidine stability-indicating assay using Kinetex 2.6µm C18 100x4.6mm

**Column:** Kinetex® 2.6 µm C18 100 Å, LC Column 100 x 4.6 mm, Ea

**Dimensions:** 100 x 4.6 mm ID

**Order No:** 00D-4462-E0

**Elution Type:** Gradient

**Eluent A:** 98:2 40mM KH<sub>2</sub>PO<sub>4</sub> pH 7.0:ACN

**Eluent B:** 78:22 40mM KH<sub>2</sub>PO<sub>4</sub> pH 7.0:ACN

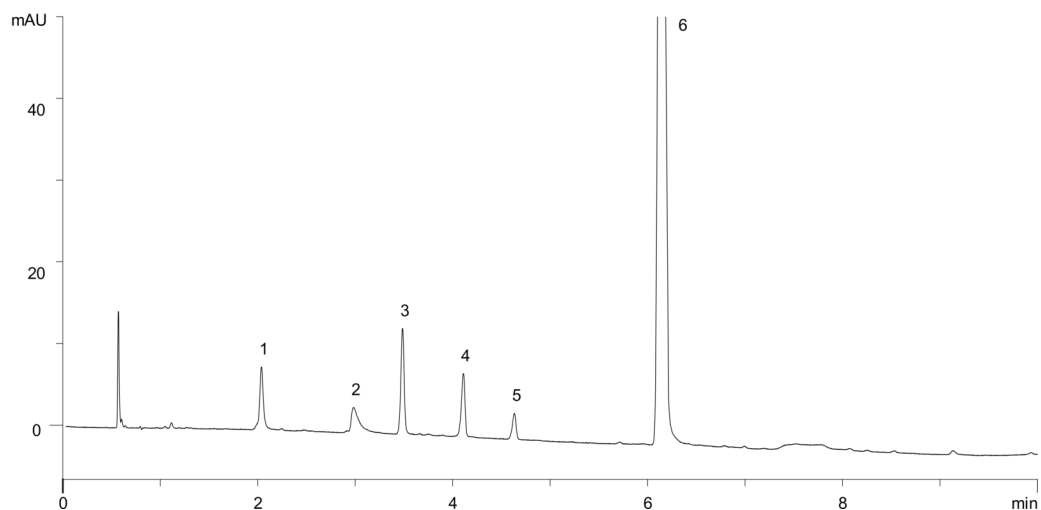
<b>Gradient Profile:</b>	<b>Step No.</b>	<b>Time (min)</b>	<b>Pct A</b>	<b>Pct B</b>
	<b>1</b>	0	100	0
	<b>2</b>	10	0	100

**Flow Rate:** 1.5 mL/min

**Col. Temp.:** ambient

**Detection:** UV-Vis Abs.-Diode Array (PDA) @ (ambient)

19279



### ANALYTES:

- 1** Ranitidine amino alcohol fumarate
- 2** Ranitidine diamine hemifumarate
- 3** Ranitidine S-oxide
- 4** Ranitidine n-oxide
- 5** Ranitidine complex nitroacetamide
- 6** Ranitidine



Products used in this application:

