

EPA Method 552.2 - Haloacetic acids on a ZB-XLB-HT (Dual column 0.32 ID)

Column: Zebron™ ZB-XLB-HT, GC Cap. Column 30 m x 0.32 mm x 0.25 µm, Ea
Phase: Proprietary XLB Phase
Dimensions: 30 meters x 0.32 mm x 0.25 µm
Order No: 7HM-G024-11
Oven Profile: 35 °C for 1 min to 55 °C @ 5 °C/min for 34 min to 220 °C @ 10 °C/min

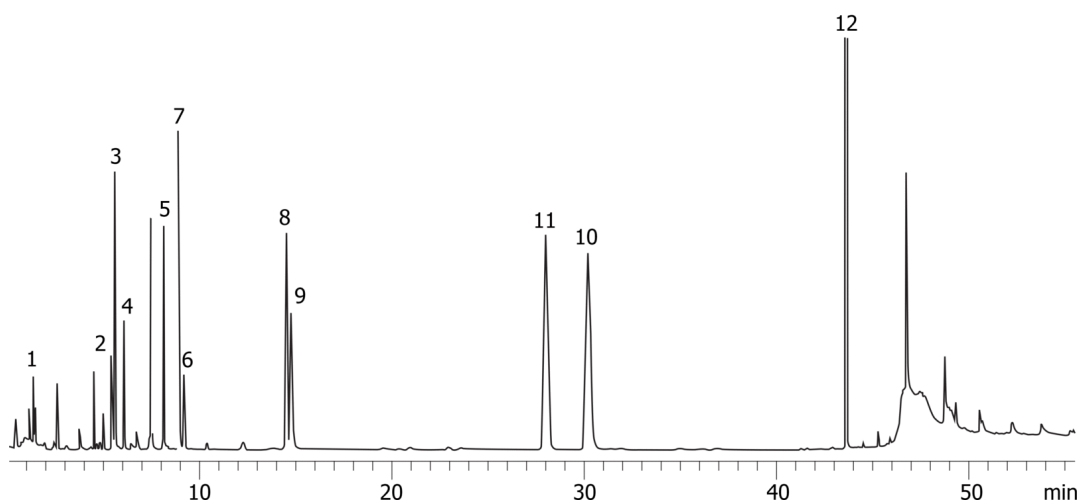
Carrier Gas: Constant Flow Helium, 2.5 mL/min
Injection: Split 25:1 1 µL @ 250°C
Detection: Electron Capture (ECD) (350°C)
Analyst Note: Analytes are methylated and 100 ppb in isoctane.
Dual column with ZB-35-HT



Products used in this application:



19285



EPA Method 552.2 - Haloacetic acids on a ZB-XLB-HT(Dual column 0.32 ID)

ANALYTES:

- 1 Chloroacetic acid
- 2 Bromoacetic acid
- 3 Dichloroacetic acid
- 4 Dalapon
- 5 Trichloroacetic acid
- 6 1,2,3-Trichloropropane
- 7 Bromochloroacetic acid
- 8 Bromodichloroacetic acid
- 9 Dibromoacetic acid
- 10 Chlorodibromoacetic acid
- 11 2,3-Dibromopropionate
- 12 Tribromoacetic acid

