

# GC Application

ID No.: 19287

## EPA 552.2 by Strata-SAX on a ZB-MR2

**Column:** Zebtron<sup>™</sup> ZB-MultiResidue<sup>™</sup>-2, GC Cap. Column 30 m x 0.32 mm x 0.25  $\mu$ m, Ea

**Phase:** Proprietary Pesticides Phase

**Dimensions:** 30 meters x 0.32 mm x 0.25  $\mu$ m

**Order No:** 7HM-G017-11

**Oven Profile:** 30°C for 4 min to 50°C @ 30°C/min for 1 min to 70°C @ 15°C/min for 1 min to 115°C @ 20°C/min for 2 min to 200°C @ 30°C/min.

**Carrier Gas:** Constant Flow Helium, 2.3 mL/min

**Injection:** Pulsed :1 1  $\mu$ L @ 250°C

**Detection:** Electron Capture (ECD) (340°C)

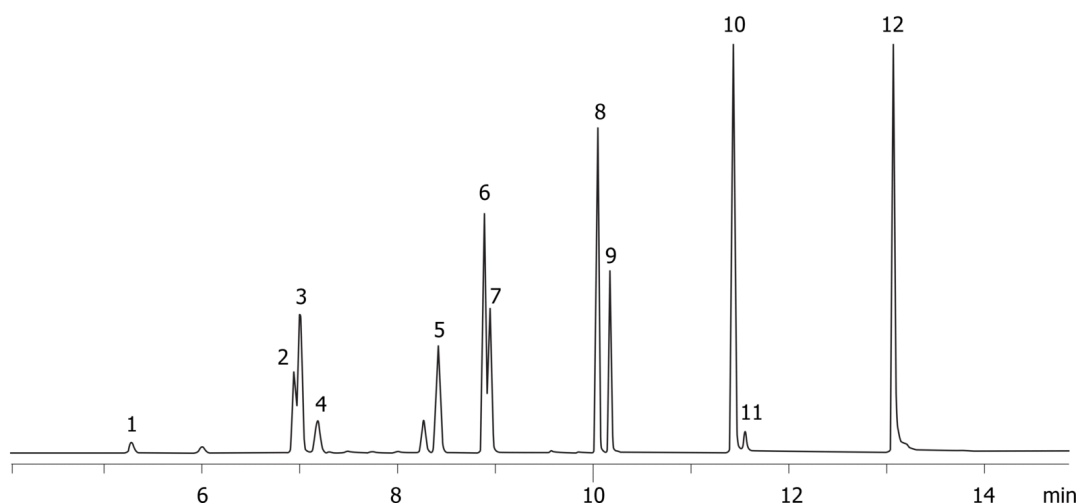
**Analyst Note:** Derivatization: Add 1mL of MTBE to the eluent in a screw cap vial or test tube. Heat the sample at 50°C for 2 hours. Remove and allow the sample to cool to room temperature. Slowly add 10mL of saturated sodium bicarbonate and invert the sample several times releasing carbon dioxide gas frequently. Aspirate 100 $\mu$ L of the organic layer and transfer to a 2mL vial with insert. Add 10 $\mu$ L of internal standard (1,2,3-Trichloropropane) and



Products used in this application:



19287



## EPA 552.2 by Strata-SAX on a ZB-MR2

### ANALYTES:

- 1 Chloroacetic acid
- 2 Bromoacetic acid
- 3 Dichloroacetic acid
- 4 Dalapon
- 5 Trichloroacetic acid
- 6 Bromochloroacetic acid
- 7 1,2,3-Trichloropropane
- 8 Dibromoacetic acid
- 9 Bromodichloroacetic acid
- 10 Chlorodibromoacetic acid
- 11 2,3-Dibromopropionic acid
- 12 Tribromoacetic acid

