

# GC Application

ID No.: 19293

## Sex hormones on a ZB-1ms 30x0.25x0.25 by GCMS

**Column:** Zebtron™ ZB-1MS, GC Cap. Column 30 m x 0.25 mm x 0.25 µm, Ea

**Phase:** 100% Dimethylpolysiloxane

**Dimensions:** 30 meters x 0.25 mm x 0.25 µm

**Order No:** 7HG-G011-11

**Oven Profile:** 220°C to 320°C @ 10°C/min for 5 min

**Carrier Gas:** Constant Flow Helium, 1 mL/min

**Injection:** Split 10:1 1 µL @ 250°C

**Detection:** Mass Selective (MSD) (320°C)

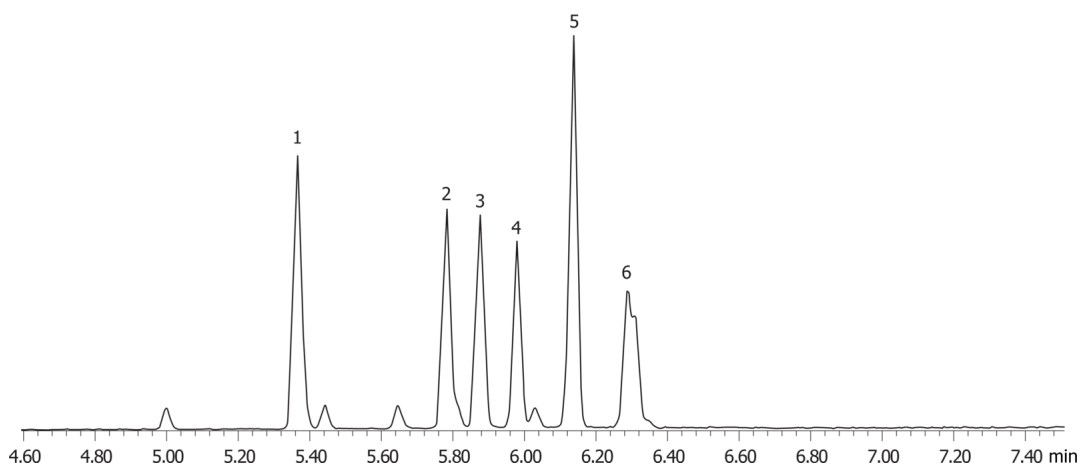
**Analyst Note:** Sample Prep: 50µL of 100µg/mL hormone mix in methanol is reacted with 50µL of 2% methoxyamine in pyridine @ 60°C for 30 minutes. Reaction mixture is evaporated to dryness under nitrogen at room temp and reconstituted in BSTFA. The BSTFA mixture is reacted at 70°C for 30 minutes and then injected into GCMS.



Products used in this application:



19293



### ANALYTES:

- 1 Androsterone
- 2 DHEA
- 3 17-alpha-Estradiol
- 4 Estrone
- 5 17-beta-Estradiol
- 6 Testosterone

