

# HPLC Application

ID No.: 19306

## TCA's LC/MS/MS Kinetex 1.7 $\mu$ m C18 50x2.1mm Agilent 1200

**Column:** Kinetex<sup>®</sup> 1.7  $\mu$ m C18 100 Å, LC Column 50 x 2.1 mm, Ea

**Dimensions:** 50 x 2.1 mm ID

**Order No:** 00B-4475-AN

**Elution Type:** Gradient

**Eluent A:** Water with 0.05% formic acid

**Eluent B:** Acetonitrile with 0.05% formic acid

Gradient Profile:	Step No.	Time (min)	Pct A	Pct B
	1	0	70	30
	2	2	60	40
	3	3	5	95
	4	3.1	70	30
	5	4.5	70	30

**Flow Rate:** 0.6 mL/min

**Col. Temp.:** ambient

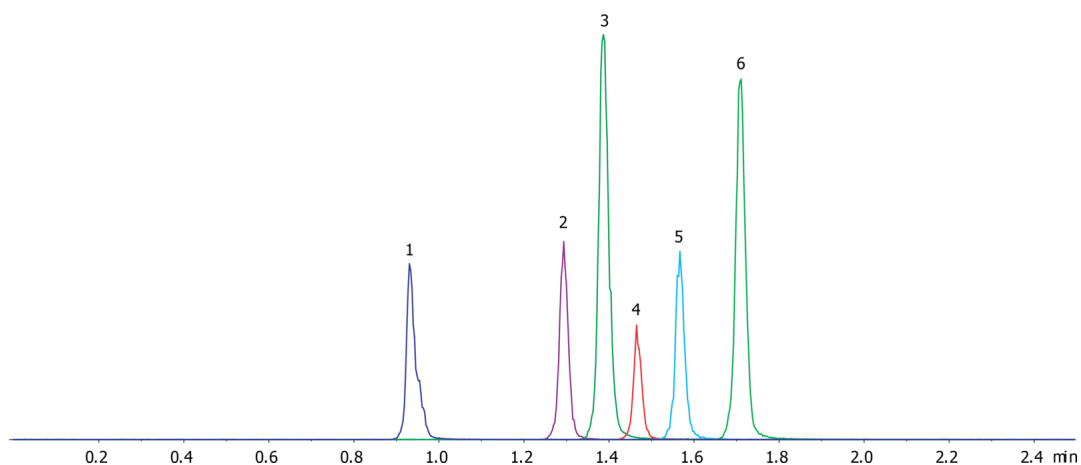
**Detection:** Mass Spectrometer (MS) @ amu (ambient)

**Detector Info:** <a target="\_blank" href="https://sciex.com/products/mass-spectrometers?utm\_campaign=2019%20application%20search&utm\_source=phenomenex&utm\_medium=referral">SCIEX<

19306



Products used in this application:



### ANALYTES:

- 1** Doxepin  
Retention Time: 0.91 min
- 2** Desipramine  
Retention Time: 1.28 min
- 3** Imipramine  
Retention Time: 1.38 min
- 4** Nortriptyline  
Retention Time: 1.46 min
- 5** Amitriptyline  
Retention Time: 1.56 min
- 6** Trimipramine  
Retention Time: 1.71 min

