

TCA's LC/MS/MS Kinetex 1.7µm C18 50x2.1mm Agilent 1200

Column: Kinetex® 1.7 µm C18 100 Å, LC Column 50 x 2.1 mm, Ea

Dimensions: 50 x 2.1 mm ID

Order No: 00B-4475-AN

Elution Type: Gradient

Eluent A: Water with 0.05% formic acid

Eluent B: Acetonitrile with 0.05% formic acid

Gradient Profile:	Step No.	Time (min)	Pct A	Pct B
	1	0	70	30
	2	2	60	40
	3	3	5	95
	4	3.1	70	30
	5	4.5	70	30

Flow Rate: 0.6 mL/min

Col. Temp.: ambient

Detection: Mass Spectrometer (MS) @ amu (ambient)

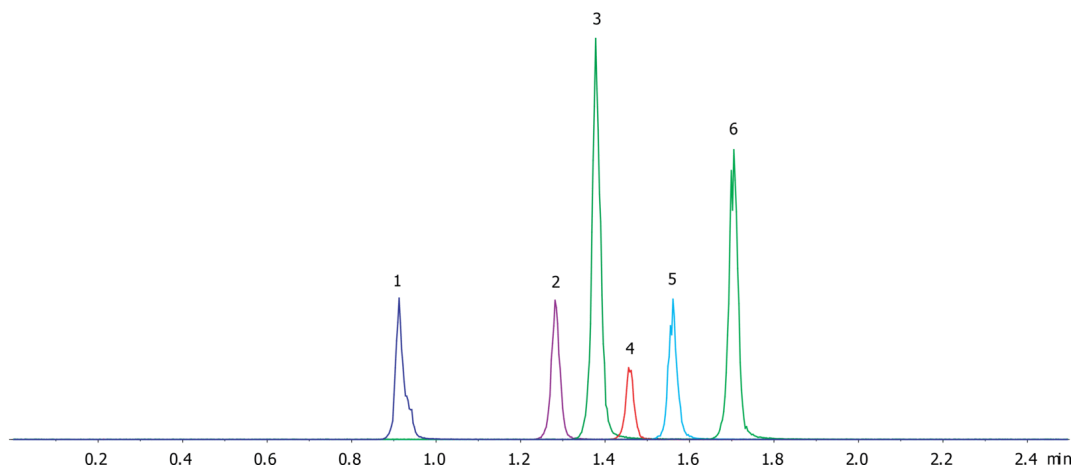
Detector Info: <a target="_blank"

19307

href="https://sciex.com/products/mass-spectrometers?utm_campaign=2019%20application%20search&utm_source=phenomenex&utm_medium=referral">SCIEX<



Products used in this application:



ANALYTES:

- 1** Doxepin
Retention Time: 0.91 min
- 2** Desipramine
Retention Time: 1.28 min
- 3** Imipramine
Retention Time: 1.38 min
- 4** Nortriptyline
Retention Time: 1.46 min
- 5** Amitriptyline
Retention Time: 1.56 min
- 6** Trimipramine
Retention Time: 1.71 min

