

HPLC Application

ID No.: 19318

Lansoprazole on Lux 5u Cellulose-4 250 x 4.6mm in RP

Column: Lux[®] 5 µm Cellulose-4, LC Column 250 x 4.6 mm, Ea

Dimensions: 250 x 4.6 mm ID

Order No: 00G-4491-E0

Elution Type: Isocratic

Eluent A: 20mM NH₄HCO₃ + 0.1%DEA

Eluent B: ACN

Gradient Profile:	Step No.	Time (min)	Pct A	Pct B
	1	0	30	70

Flow Rate: 1 mL/min

Col. Temp.: 25 °C

Detection: UV-Vis Abs.-Variable Wave.(UV) @ 220 nm (ambient)

Analyst Note: SecurityGuard[™] Guard Cartridge System extends column lifetime.

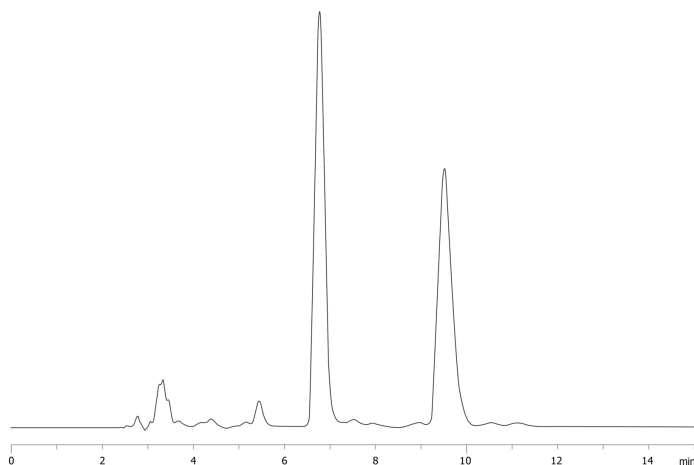
- SecurityGuard Cartridges, Lux Cellulose-4 4 x 3.0 mm, 10/Pk Part No.: AJ0-8627

- Holder Part No.: KJ0-4282

19318



Products used in this application:



ANALYTES:

- 1** Lansoprazole
Retention Time: 6.766 min
- 2** Lansoprazole
Retention Time: 9.512 min