

HPLC Application

ID No.: 19321

Fluoroquinolones from Propolis using Strata-X and Gemini-NX by LCMS

Column: Gemini® 3 µm NX-C18 110 Å, LC Column 50 x 2 mm, Ea

Dimensions: 50 x 2 mm ID

Order No: 00B-4453-B0

Elution Type: Gradient

Eluent A: 0.1% Formic acid

Eluent B: Methanol

Gradient Profile:	Step No.	Time (min)	Pct A	Pct B
	1	0	85	15
	2	5	10	90
	3	6	10	90
	4	6	10	90

Flow Rate: 0.4 mL/min

Col. Temp.: 40 °C

Detection: Mass Spectrometer (MS) @ amu (550 °C)

Detector Info: <a target="_blank"

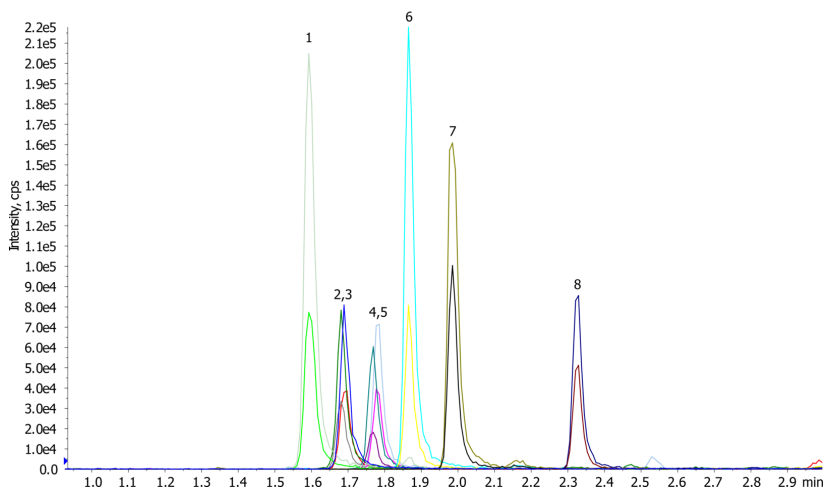
Analyst Note: href="https://sciex.com/products/mass-spectrometers?utm_campaign=2019%20application%20search&utm_source=phenomenex&utm_medium=referral">SCIEX<

Source temp: 450°C

Polarity: Postive

Dwell: 25 msec

19321



ANALYTES:

- 1 Ofloxacin
- 2 Norfloxacin
- 3 Norfloxacin-d5
- 4 Ciprofloxacin
- 5 Ciprofloxacin-d8
- 6 Enrofloxacin
- 7 Difloxacin
- 8 Sparfloxacin



Products used in this application:

