

HPLC Application

ID No.: 19344

1-(Phenylsulfonyl)-3-indoleboronic acid on Lux Cellulose-4 with Acetonitrile

Column: Lux® 5 µm Cellulose-4, LC Column 250 x 4.6 mm, Ea

Dimensions: 250 x 4.6 mm ID

Order No: 00G-4491-E0

Elution Type: Isocratic

Eluent A: 0.1% Formic acid

Eluent B: Acetonitrile

Gradient Profile:	Step No.	Time (min)	Pct A	Pct B
	1	0	60	40

Flow Rate: 1 mL/min

Col. Temp.: 25 °C

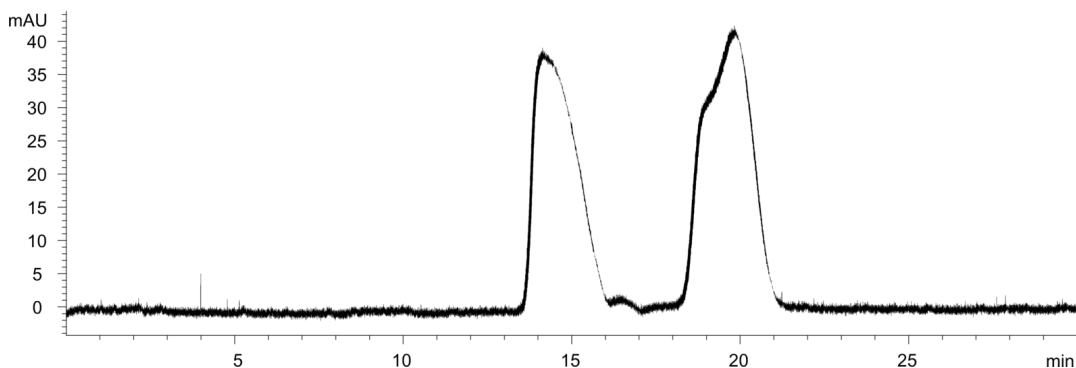
Detection: Mass Spectrometer (MS) @ 300.0/209.8 amu (ambient)

Detector Info: <a target="_blank"

href="https://sciex.com/products/mass-spectrometers?utm_campaign=2019%20application%20search&utm_source=phenomenex&utm_medium=referral">SCIEX<

Analyst Note: flow split to 0.25 mL/min into MS

19324



Products used in this application:



ANALYTES:

- 1 1-(Phenylsulfonyl)-3-indoleboronic acid
- 2 1-(Phenylsulfonyl)-3-indoleboronic acid

