

# HPLC Application

ID No.: 19460

## Bivalirudin Purification-Fraction 32.2 min

**Column:** Kinetex<sup>®</sup> 2.6 μm C18 100 Å, LC Column 100 x 4.6 mm, Ea

**Dimensions:** 100 x 4.6 mm ID

**Order No:** 00D-4462-E0

**Elution Type:** Gradient

**Eluent A:** 0.1% TFA in Water

**Eluent B:** 0.1% TFA in ACN

<b>Gradient Profile:</b>	<b>Step No.</b>	<b>Time (min)</b>	<b>Pct A</b>	<b>Pct B</b>
	<b>1</b>	0	77	23
	<b>2</b>	8	69	31
	<b>3</b>	8.1	77	23
	<b>4</b>	11	77	23

**Flow Rate:** 1.85 mL/min

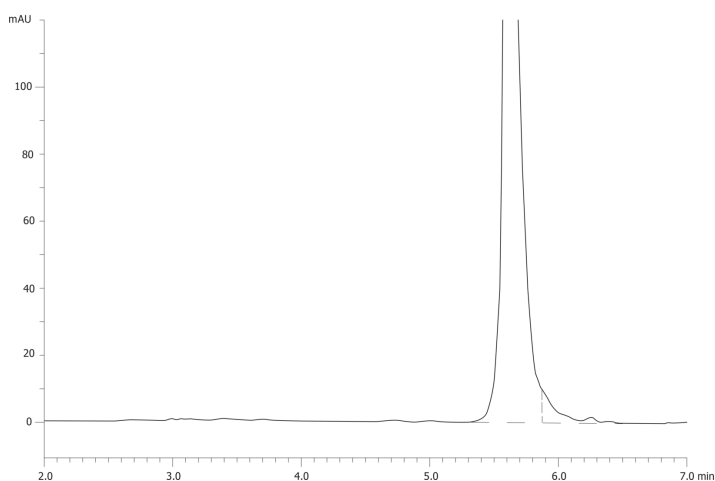
**Col. Temp.:** ambient

**Detection:** UV-Vis Abs.-Variable Wave.(UV) @ 220 nm (ambient)

19460



Products used in this application:



### ANALYTES:

**1** Bivalirudin

Retention Time: 5.61 min

**2** rear impurities

Retention Time: 5.85 min

