

# HPLC Application

ID No.: 19467

## Veterinary Drugs in Horse Urine on Luna 3µm C18(2) 100x4.6mm

**Column:** Luna® 3 µm C18(2) 100 Å, LC Column 100 x 4.6 mm, Ea

**Dimensions:** 100 x 4.6 mm ID

**Order No:** 00D-4251-E0

**Elution Type:** Gradient

**Eluent A:** 0.1% Phosphoric Acid in Water

**Eluent B:** 0.1% Phosphoric Acid in Acetonitrile

Gradient Profile:	Step No.	Time (min)	Pct A	Pct B
	1	0	70	30
	2	4	50	50
	3	7.5	30	70
	4	9	5	95
	5	10	70	30

**Flow Rate:** 1.5 mL/min

**Col. Temp.:** 25 °C

**Detection:** UV-Vis Abs.-Variable Wave.(UV) @ 230 nm (ambient)

**Analyst Note:** SecurityGuard™ Guard Cartridge System extends column lifetime.

- SecurityGuard Cartridges, C18 4 x 3.0mm ID, 10/Pk Part No.: AJ0-4287

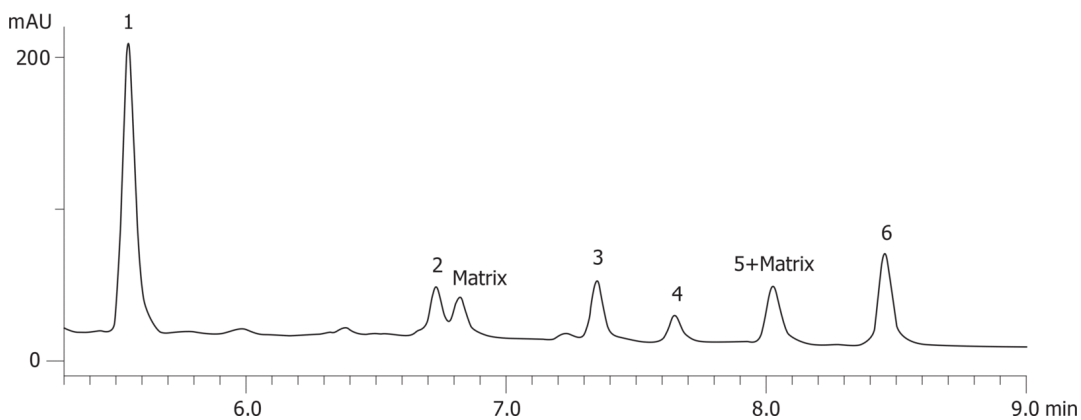
- Holder Part No.: KJ0-4282



Products used in this application:



19467



### ANALYTES:

- 1 Naproxen
- 2 Fenoprofen
- 3 Ibuprofen
- 4 Phenylbutazone
- 5 Indomethacin
- 6 Meclofenamic acid
- 7 matrix impurity
- 8 matrix impurity

