

HPLC Application

ID No.: 19471

Veterinary Drugs in Horse Urine on Luna 3µm C8(2) 100x4.6mm

Column: Luna® 3 µm C8(2) 100 Å, LC Column 100 x 4.6 mm, Ea

Dimensions: 100 x 4.6 mm ID

Order No: 00D-4248-E0

Elution Type: Gradient

Eluent A: 0.1% Phosphoric Acid in Water

Eluent B: 0.1% Phosphoric Acid in Acetonitrile

Gradient Profile:	Step No.	Time (min)	Pct A	Pct B
	1	0	70	30
	2	4	50	50
	3	7.5	30	70
	4	9	5	95
	5	10	70	30

Flow Rate: 1.5 mL/min

Col. Temp.: 25 °C

Detection: UV-Vis Abs.-Variable Wave.(UV) @ 230 nm (ambient)

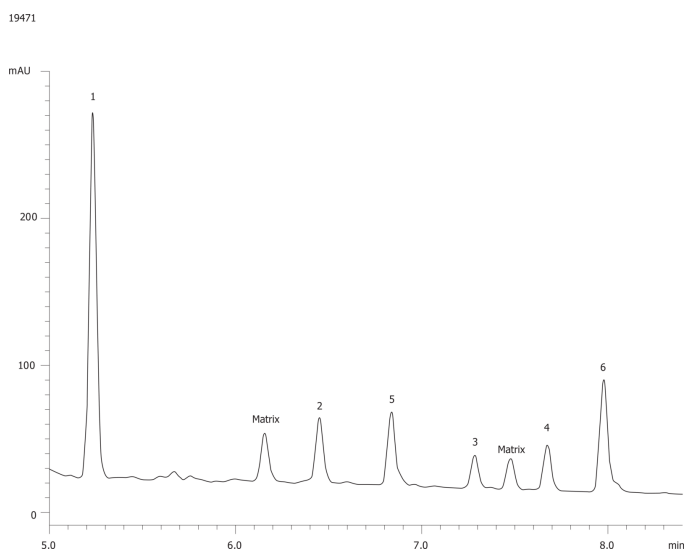
Analyst Note: SecurityGuard™ Guard Cartridge System extends column lifetime.

- SecurityGuard Cartridges, C8 4 x 3.0mm ID, 10/Pk Part No.: AJ0-4290

- Holder Part No.: KJ0-4282



Products used in this application:



ANALYTES:

- 1 Naproxen
- 2 Fenoprofen
- 3 Ibuprofen
- 4 Phenylbutazone
- 5 Indomethacin
- 6 Meclofenamic acid
- 7 matrix impurity
- 8 matrix impurity

