

HPLC Application

ID No.: 19472

Veterinary Drugs in Horse Urine on Kinetex 2.6µm C8 50x4.6mm @ 1.50mL/min

Column: Kinetex® 2.6 µm C8 100 Å, LC Column 50 x 4.6 mm, Ea

Dimensions: 50 x 4.6 mm ID

Order No: 00B-4497-E0

Elution Type: Gradient

Eluent A: 0.1% Phosphoric Acid in Water

Eluent B: 0.1% Phosphoric Acid in Acetonitrile

| Gradient Profile: | Step No. | Time (min) | Pct A | Pct B |
|-------------------|----------|------------|-------|-------|
| | 1 | 0 | 70 | 30 |
| | 2 | 2 | 50 | 50 |
| | 3 | 3.75 | 30 | 70 |
| | 4 | 4.5 | 5 | 95 |
| | 5 | 5 | 70 | 30 |

Flow Rate: 1.5 mL/min

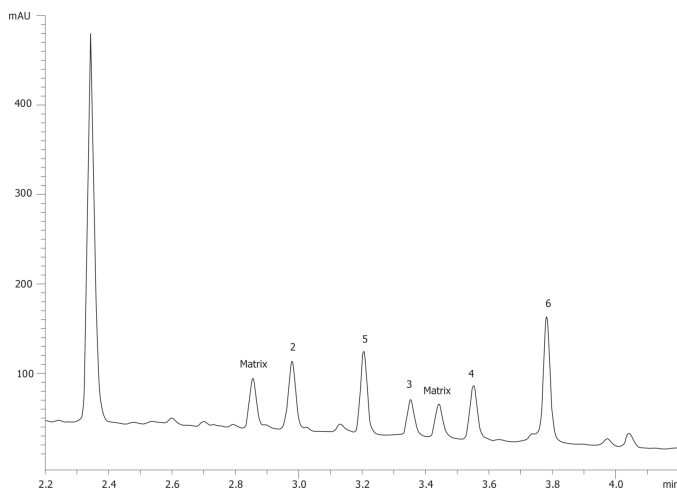
Col. Temp.: ambient

Detection: UV-Vis Abs.-Variable Wave.(UV) @ 230 nm (ambient)

19472



Products used in this application:



ANALYTES:

- 1 Naproxen
- 2 Fenoprofen
- 3 Ibuprofen
- 4 Phenylbutazone
- 5 Indomethacin
- 6 Meclofenamic acid
- 7 matrix impurity
- 8 matrix impurity

