

HPLC Application

ID No.: 19473

Veterinary Drugs in Horse Urine on Kinetex 2.6µm C8 50x4.6mm @ 2.00mL/min

Column: Kinetex® 2.6 µm C8 100 Å, LC Column 50 x 4.6 mm, Ea

Dimensions: 50 x 4.6 mm ID

Order No: 00B-4497-E0

Elution Type: Gradient

Eluent A: 0.1% Phosphoric Acid in Water

Eluent B: 0.1% Phosphoric Acid in Acetonitrile

Gradient Profile:	Step No.	Time (min)	Pct A	Pct B
	1	0	70	30
	2	2	50	50
	3	3.75	30	70
	4	4.5	5	95
	5	5	70	30

Flow Rate: 2 mL/min

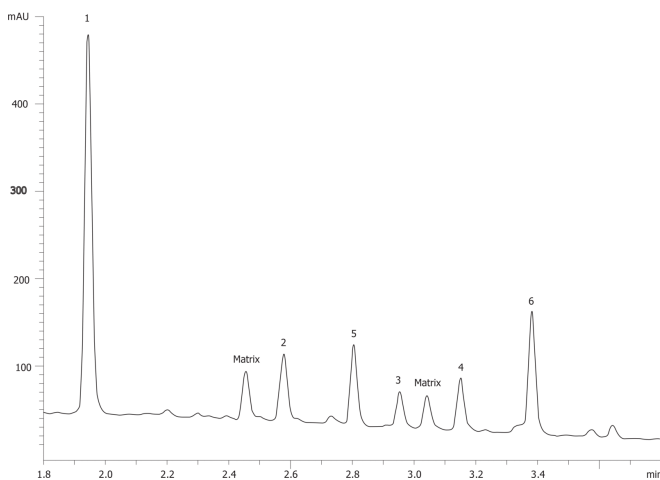
Col. Temp.: ambient

Detection: UV-Vis Abs.-Variable Wave.(UV) @ 230 nm (ambient)

19473



Products used in this application:



ANALYTES:

- 1 Naproxen
- 2 Fenoprofen
- 3 Ibuprofen
- 4 Phenylbutazone
- 5 Indomethacin
- 6 Meclofenamic acid
- 7 matrix impurity
- 8 matrix impurity

