

HPLC Application

ID No.: 19475

Pharmaceutical Mixture on Kinetex XB-C18

Column: Kinetex[®] 2.6 μm XB-C18 100 Å, LC Column 50 x 2.1 mm, Ea

Dimensions: 50 x 2.1 mm ID

Order No: 00B-4496-AN

Elution Type: Gradient

Eluent A: 0.1% Formic Acid in Water

Eluent B: 0.1% Formic Acid in AcCN

Gradient Profile:	Step No.	Time (min)	Pct A	Pct B
	1	0	95	5
	3	4	5	95
	4	0.2	95	5

Flow Rate: 0.8 mL/min

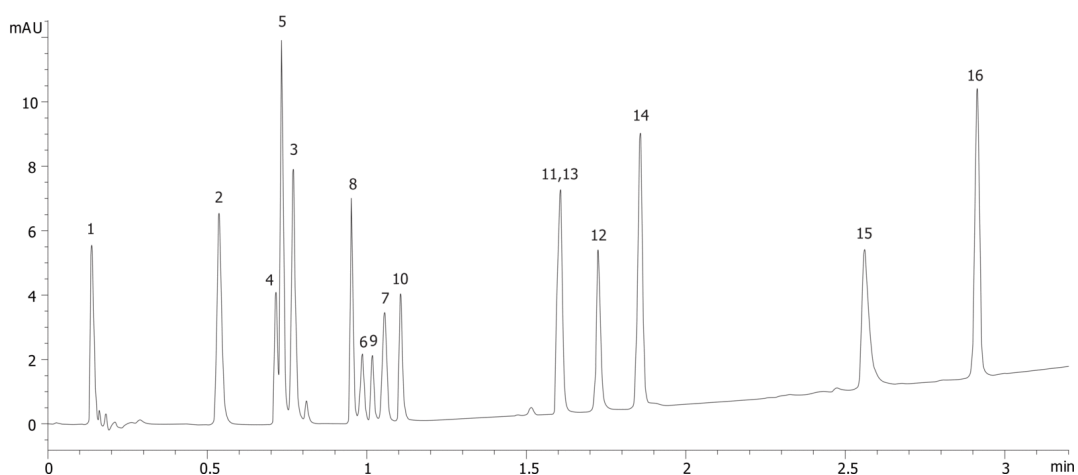
Col. Temp.: ambient

Detection: UV-Vis Abs.-Variable Wave.(UV) @ 254 nm (ambient)

19475



Products used in this application:



Pharmaceutical Mixture on Kinetex XB-C18

ANALYTES:

- 1** Pyridine
- 2** Acetaminophen
- 3** Sulfathiazole
- 4** Pindolol
- 5** Quinidine
- 6** Benzyl alcohol
- 7** Phenol
- 8** Acebutolol
- 9** Chlorpheniramine
- 10** Triprolidine
- 11** Prednisolone
- 12** 3-Methyl-4-nitrobenzoic acid
- 13** Nortriptyline
- 14** 2-Hydroxy-5-methylbenzaldehyde
- 15** Diflunisal
- 16** Hexanophenone

