

HPLC Application

ID No.: 19476

Pharmaceutical Mixture on Kinetex 2.6µm C8 50x2.1mm ID

Column: Kinetex® 2.6 µm C8 100 Å, LC Column 50 x 2.1 mm, Ea

Dimensions: 50 x 2.1 mm ID

Order No: 00B-4497-AN

Elution Type: Gradient

Eluent A: 0.1% Formic Acid in Water

Eluent B: 0.1% Formic Acid in AcCN

Gradient Profile:	Step No.	Time (min)	Pct A	Pct B
	1	0	95	5
	3	0.2	95	5
	4	4	5	95

Flow Rate: 0.8 mL/min

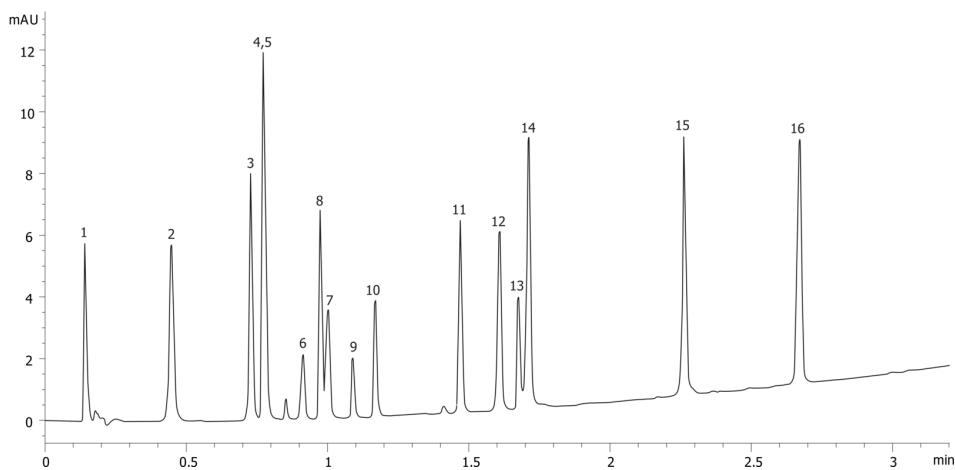
Col. Temp.: ambient

Detection: UV-Vis Abs.-Variable Wave.(UV) @ 254 nm (ambient)

19476



Products used in this application:



Pharmaceutical Mixture on Kinetex 2.6µm C8 50x2.1mm ID

ANALYTES:

- 1 Pyridine
- 2 Acetaminophen
- 3 Sulfathiazole
- 4 Pindolol
- 5 Quinidine
- 6 Benzyl alcohol
- 7 Phenol
- 8 Acebutolol
- 9 Chlorpheniramine
- 10 Triprolidine
- 11 Prednisolone
- 12 3-Methyl-4-nitrobenzoic acid
- 13 Nortriptyline
- 14 2-Hydroxy-5-methylbenzaldehyde
- 15 Diflunisal
- 16 Hexanophenone

