

Steroid Mixture on Kinetex C18

Column: Kinetex® 2.6 µm C18 100 Å, LC Column 50 x 2.1 mm, Ea

Dimensions: 50 x 2.1 mm ID

Order No: 00B-4462-AN

Elution Type: Gradient

Eluent A: Water

Eluent B: Acetonitrile

Gradient Profile:	Step No.	Time (min)	Pct A	Pct B
	1	0	80	20
	2	6	40	60

Flow Rate: 0.5 mL/min

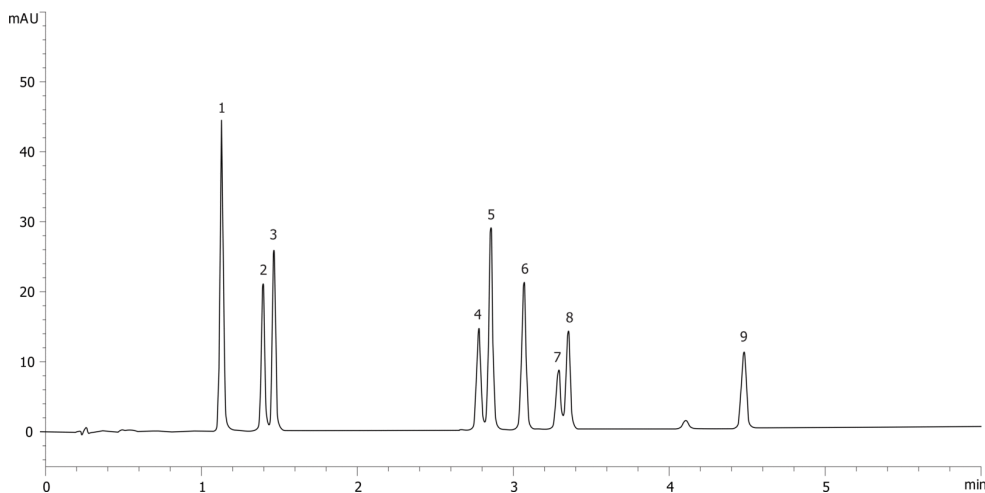
Col. Temp.: ambient

Detection: UV-Vis Abs.-Variable Wave.(UV) @ 220 nm (ambient)

19477



Products used in this application:



ANALYTES:

- 1** Estriol
Retention Time: 1.05 min
- 2** Hydrocortisone
Retention Time: 1.2 min
- 3** Cortisone
Retention Time: 1.25 min
- 4** Cortisone-21-acetate
Retention Time: 2.8 min
- 5** Estradiol
Retention Time: 2.9 min
- 6** 21-Hydroxyprogesterone
Retention Time: 3.1 min
- 7** Estrone
Retention Time: 3.3 min
- 8** 17-Hydroxyprogesterone
Retention Time: 3.4 min
- 9** Deoxycorticosterone
Retention Time: 4.5 min

