

HPLC Application

ID No.: 19481

Iso-alpha acids using Kinetex C18 2.6µm 50x4.6mm

Column: Kinetex® 2.6 µm C18 100 Å, LC Column 50 x 4.6 mm, Ea

Dimensions: 50 x 4.6 mm ID

Order No: 00B-4462-E0

Elution Type: Isocratic

Eluent A: Methanol

Eluent B: Water

Eluent C: Phosphoric acid

Gradient Profile:	Step No.	Time (min)	Pct A	Pct B	Pct C
	1	0	75	24	1

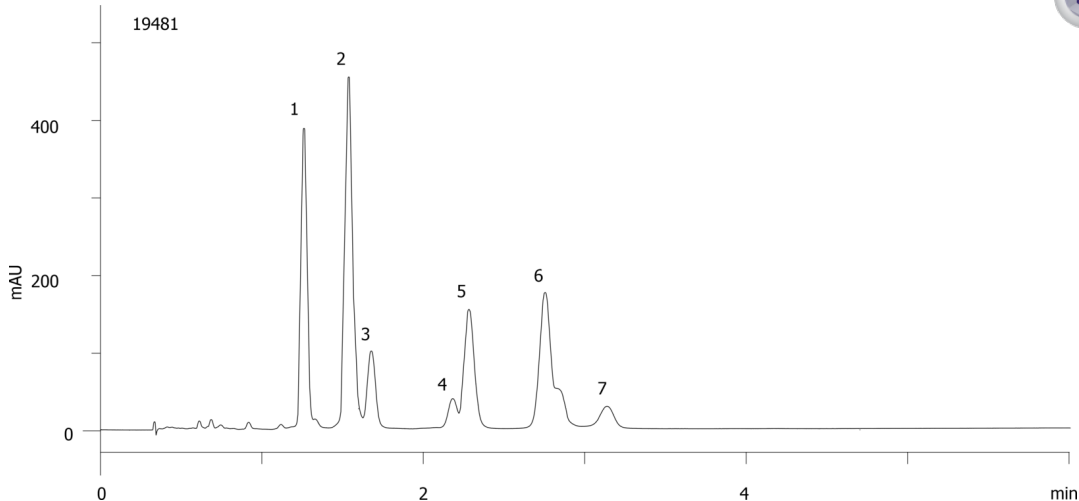
Flow Rate: 1.4 mL/min

Col. Temp.: ambient

Detection: UV-Vis Abs.-Variable Wave.(UV) @ 270 nm (ambient)



Products used in this application:



ANALYTES:

- 1 Iso-cohumulone
- 2 Isohumulone
- 3 Isoadhumulone
- 4 trans-Tetrahydroisocohumulone
- 5 cis-Tetrahydroisocohumulone
- 6 Tetrahydroisohumulone
- 7 Tetrahydroisoadhumulone

