

HPLC Application

ID No.: 19482

Iso-alpha acids using Kinetex C18 2.6µm 100x4.6mm

Column: Kinetex[®] 2.6 µm C18 100 Å, LC Column 100 x 4.6 mm, Ea

Dimensions: 100 x 4.6 mm ID

Order No: 00D-4462-E0

Elution Type: Isocratic

Eluent A: Methanol

Eluent B: Water

Eluent C: Phosphoric acid

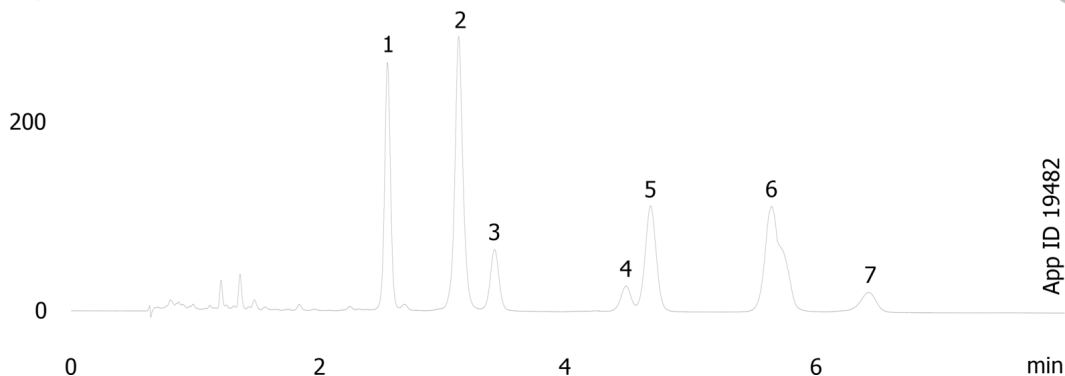
Gradient Profile:	Step No.	Time (min)	Pct A	Pct B	Pct C
	1	0	75	24	1

Flow Rate: 1.4 mL/min

Col. Temp.: ambient

Detection: UV-Vis Abs.-Variable Wave.(UV) @ 270 nm (ambient)

mAU



Products used in this application:



ANALYTES:

- 1 Iso-cohumulone
- 2 Isohumulone
- 3 Isoadhumulone
- 4 trans-Tetrahydroisocohumulone
- 5 cis-tetrahydroisocohumulone
- 6 Tetrahydroisohumulone
- 7 Tetrahydroisoadhumulone

