

## Tetrahydroiso- $\alpha$ acids extracted from beer by Strata-X using Kinetex C18 2.6 $\mu$ m 100x4.6 mm

**Column:** Kinetex® 2.6  $\mu$ m C18 100 Å, LC Column 100 x 4.6 mm, Ea

**Dimensions:** 100 x 4.6 mm ID

**Order No:** 00D-4462-E0

**Elution Type:** Isocratic

**Eluent A:** Methanol

**Eluent B:** Water

**Eluent C:** Phosphoric acid

Gradient Profile:	Step No.	Time (min)	Pct A	Pct B	Pct C
	1	0	75	24	1

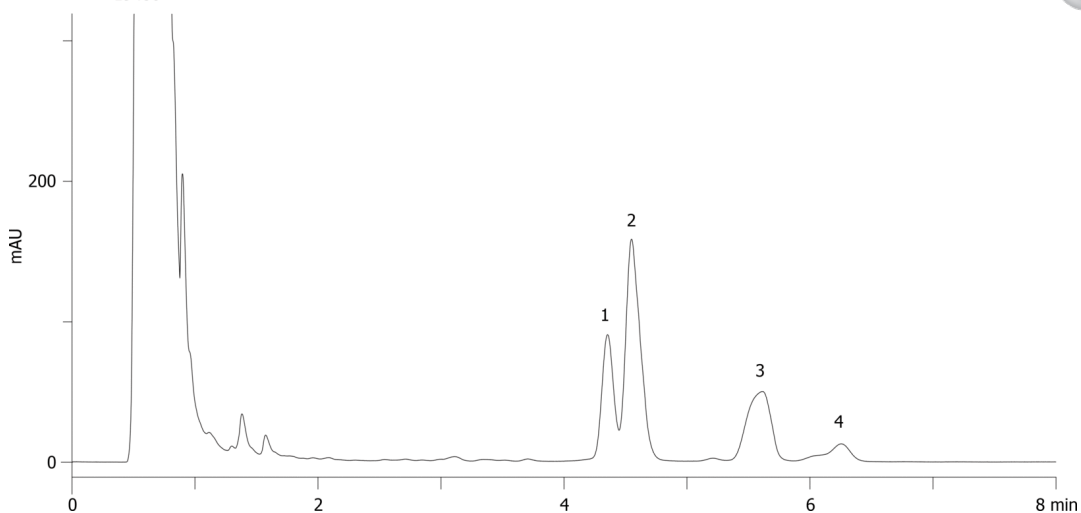
**Flow Rate:** 1.4 mL/min

**Col. Temp.:** ambient

**Detection:** UV-Vis Abs.-Variable Wave.(UV) @ 270 nm (ambient)  
19486



Products used in this application:



### ANALYTES:

- 1 trans-Tetrahydroisochumulone
- 2 cis-Tetrahydroisochumulone
- 3 Tetrahydroisochumulone
- 4 Tetrahydroisoadhumulone

