

HPLC Application

ID No.: 19496

Ranitidine (Degraded) by HPLC - Kinetex 2.6µm C8 100x4.6mm

Column: Kinetex® 2.6 µm C8 100 Å, LC Column 100 x 4.6 mm, Ea

Dimensions: 100 x 4.6 mm ID

Order No: 00D-4497-E0

Elution Type: Gradient

Eluent A: 98:2 40mM potassium phosphate pH 7.1:Acetonitrile

Eluent B: 78:22 40mM potassium phosphate pH 7.1:Acetonitrile

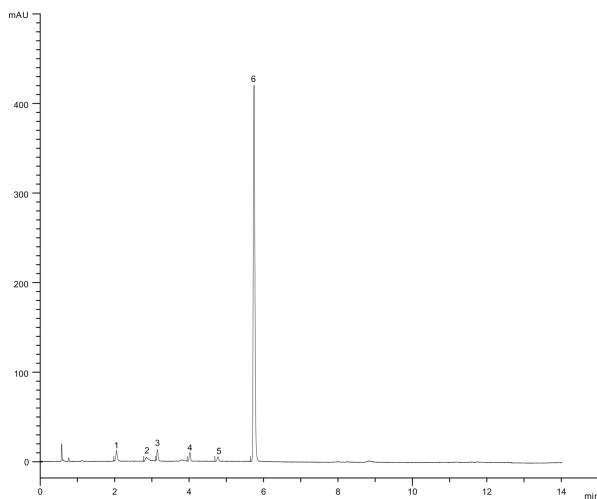
Gradient Profile:	Step No.	Time (min)	Pct A	Pct B
	1	0	100	0
	2	10	0	100
	3	15	0	100
	4	16	100	0
	5	20	100	0

Flow Rate: 1.5 mL/min

Col. Temp.: ambient

Detection: UV-Vis Abs.-Diode Array (PDA) @ 230 amu (ambient)

19496



ANALYTES:

- 1** Ranitidine amino alcohol hemifumarate
Retention Time: 2.048 min
- 2** Ranitidine diamine hemifumarate
Retention Time: 2.853 min
- 3** Ranitidine S-oxide
Retention Time: 3.148 min
- 4** Ranitidine N-oxide
Retention Time: 4.018 min
- 5** Ranitidine complex nitroacetamide
Retention Time: 4.768 min
- 6** Ranitidine
Retention Time: 5.737 min



Products used in this application:

