

HPLC Application

ID No.: 19505

Preservatives extracted from hand lotion and analyzed using Kinetex 2.6µm XBC18 100x4.6mm

Column: Kinetex[®] 2.6 µm XB-C18 100 Å, LC Column 100 x 4.6 mm, Ea

Dimensions: 100 x 4.6 mm ID

Order No: 00D-4496-E0

Elution Type: Gradient

Eluent A: Water with 0.1% TFA

Eluent B: Acetonitrile with 0.1% TFA

Gradient Profile:	Step No.	Time (min)	Pct A	Pct B
	1	0	85	15
	2	20	15	85

Flow Rate: 1.5 mL/min

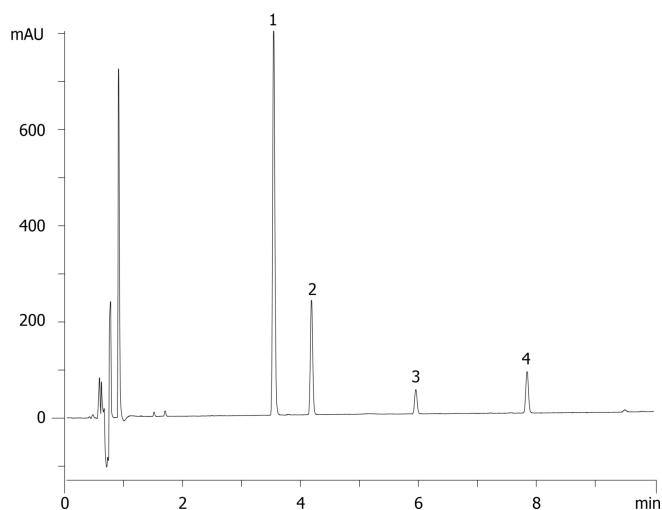
Col. Temp.: ambient

Detection: UV-Vis Abs.-Diode Array (PDA) @ (ambient)

19505



Products used in this application:



ANALYTES:

- 1 Phenoxyethanol
- 2 Methyl paraben
- 3 Ethyl paraben
- 4 Propyl paraben

