

# HPLC Application

ID No.: 19512

## USP Norethindrone, Progesterone and Mestranol on Kinetex 2.6 $\mu$ m C8 100x4.60mm @1.0mL/min

**Column:** Kinetex<sup>®</sup> 2.6  $\mu$ m C8 100 Å, LC Column 100 x 4.6 mm, Ea

**Dimensions:** 100 x 4.6 mm ID

**Order No:** 00D-4497-E0

**Elution Type:** Isocratic

**Eluent A:** 50:50 Acetonitrile:Water

Gradient	Step No.	Time (min)	Pct A
<b>Profile:</b>	<b>1</b>	15	100

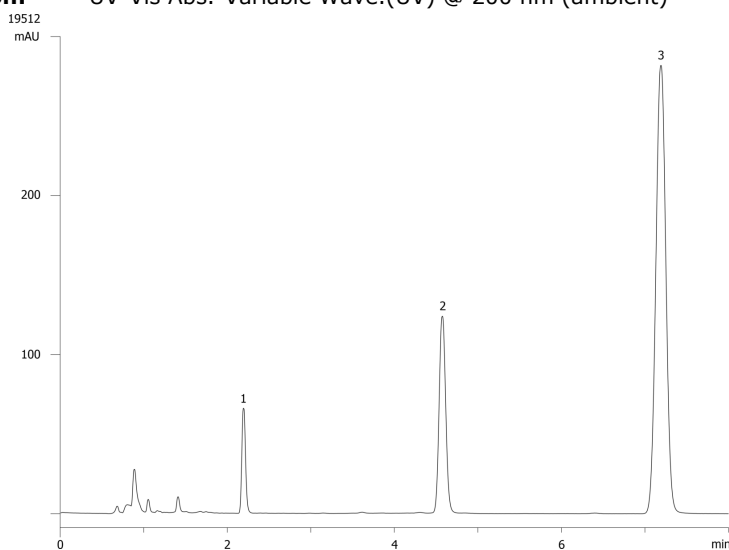
**Flow Rate:** 1 mL/min

**Col. Temp.:** ambient

**Detection:** UV-Vis Abs.-Variable Wave.(UV) @ 200 nm (ambient)



Products used in this application:



### ANALYTES:

- 1** Norethindrone  
Retention Time: 2.196 min
- 2** Progesterone  
Retention Time: 4.574 min
- 3** Mestranol  
Retention Time: 7.19 min