

HPLC Application

ID No.: 19518

Simvastatin by HPLC- Luna 5µm C18(2) 250x4.6mm

Column: Luna® 5 µm C18(2) 100 Å, LC Column 250 x 4.6 mm, Ea

Dimensions: 250 x 4.6 mm ID

Order No: 00G-4252-E0

Elution Type: Isocratic

Eluent A: 65:35 ACN:28mM sodium phosphate pH 4.5

Gradient	Step No.	Time (min)	Pct A
Profile:	1	15	100

Flow Rate: 1.5 mL/min

Col. Temp.: 45 °C

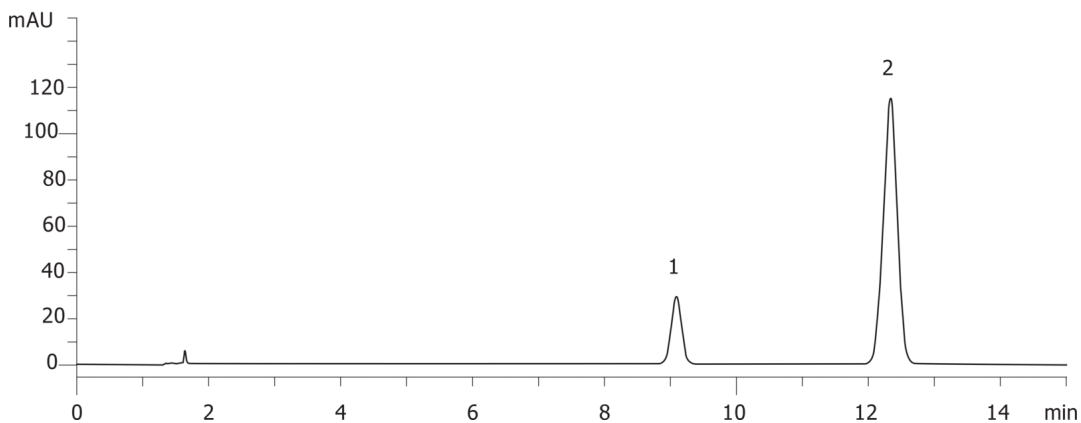
Detection: UV-Vis Abs.-Diode Array (PDA) @ 238 nm (ambient)

Analyst Note: For USP's system suitability requirements, the capacity factor for simvastatin must not be less than 3.0; column efficiency not less than 4500 theoretical plates; tailing factor not more than 2.0; resolution, while not specified according to USP standards, should be adequate at no less than 1.5.

19518



Products used in this application:



ANALYTES:

1 Lovastatin

Retention Time: 9.09 min

2 Simvastatin

Retention Time: 12.338 min

