

# HPLC Application

ID No.: 19562

## USP Loratadine on Kinetex 2.6 $\mu$ m C8 150x4.60mm

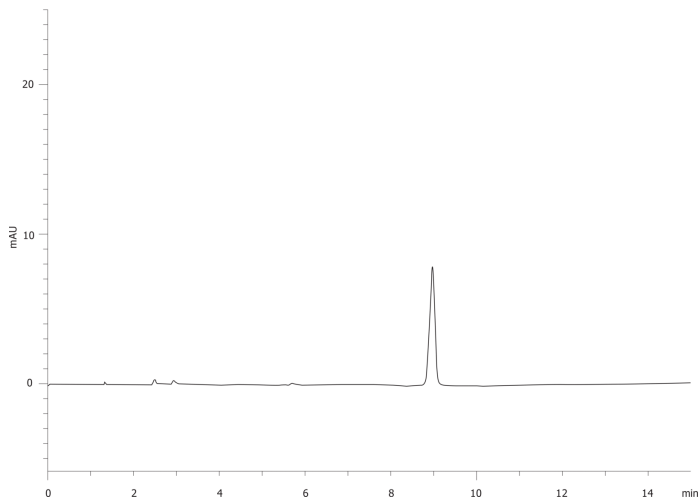
**Column:** Kinetex<sup>®</sup> 2.6  $\mu$ m C8 100 Å, LC Column 150 x 4.6 mm, Ea  
**Dimensions:** 150 x 4.6 mm ID  
**Order No:** 00F-4497-E0  
**Elution Type:** Isocratic  
**Eluent A:** 31.5:31.5:36.8 Methanol:Acetonitrile:Solution A(1.74mg/mL Anhydrous Dibasic Potassium Phosphate)  
**Gradient**

| Step No. | Time (min) | Pct A |
|----------|------------|-------|
| 1        | 15         | 100   |

**Flow Rate:** 1  
**Col. Temp.:** ambient  
**Detection:** UV-Vis Abs.-Variable Wave.(UV) @ 254 nm (ambient)



Products used in this application:



### ANALYTES:

1 Loratadine

