

HPLC Application

ID No.: 19564

USP Loratadine on Kinetex 2.6 μ m C8 75x4.60mm

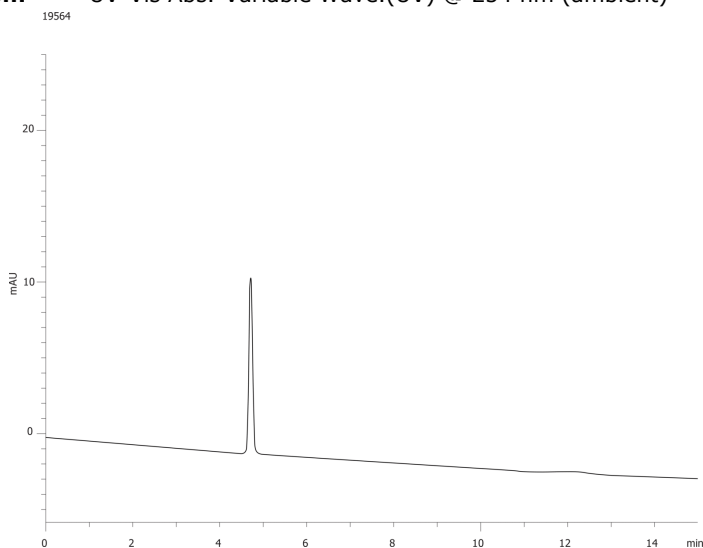
Column: Kinetex[®] 2.6 μ m C8 100 Å, LC Column 75 x 4.6 mm, Ea
Dimensions: 75 x 4.6 mm ID
Order No: 00C-4497-E0
Elution Type: Isocratic
Eluent A: 31.5:31.5:36.8 Methanol:Acetonitrile:Solution A(1.74mg/mL Anhydrous Dibasic Potassium Phosphate)
Gradient

| Step No. | Time (min) | Pct A |
|----------|------------|-------|
| 1 | 15 | 100 |

Profile:
Flow Rate: 1 mL/min
Col. Temp.: ambient
Detection: UV-Vis Abs.-Variable Wave.(UV) @ 254 nm (ambient)



Products used in this application:



ANALYTES:

1 Loratadine

