

HPLC Application

ID No.: 19566

USP Loratadine with two related compounds (A&B) on Kinetex 2.6µm C18 100x4.6mm

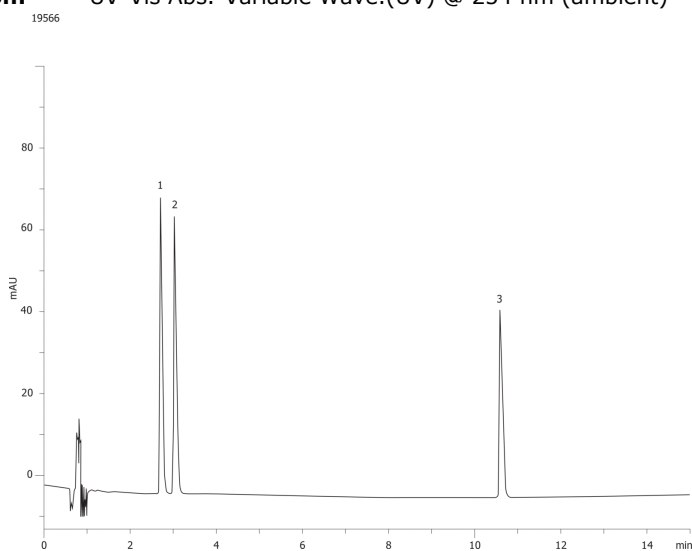
Column: Kinetex[®] 2.6 µm C18 100 Å, LC Column 100 x 4.6 mm, Ea
Dimensions: 100 x 4.6 mm ID
Order No: 00D-4462-E0
Elution Type: Gradient
Eluent A: 0.96g 1-pentaesulfonic acid sodium salt in 1-L buffered to 3.00 with Phosphoric Acid
Eluent B: Acetonitrile
Gradient Profile:

Step No.	Time (min)	Pct A	Pct B
1	0	75	25
2	20	50	50
3	30	40	60
4	35	30	70
5	45	30	70
6	50	75	25

Flow Rate: 1.2 mL/min
Col. Temp.: ambient
Detection: UV-Vis Abs.-Variable Wave.(UV) @ 254 nm (ambient)



Products used in this application:



ANALYTES:

- 1 Loratadine related compound A
- 2 Loratadine related compound B
- 3 Loratadine

