

# HPLC Application

ID No.: 19567

## USP Loratadine with two related compounds (A&B) on Kinetex 2.6µm XB-C18 75x4.6mm

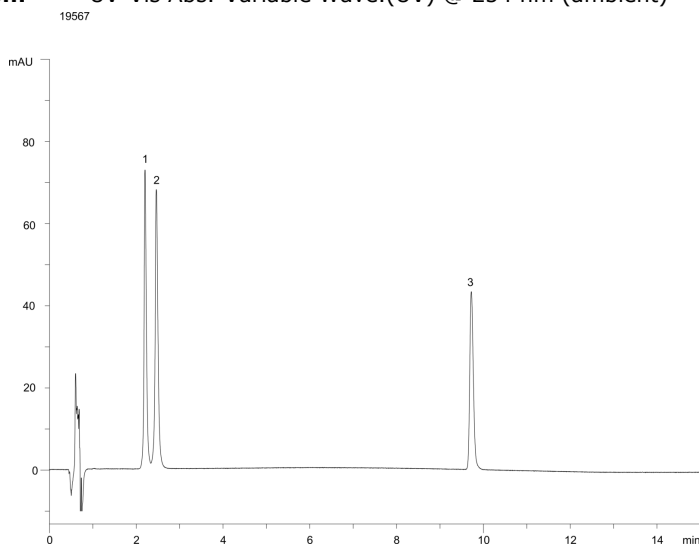
**Column:** Kinetex® 2.6 µm XB-C18 100 Å, LC Column 75 x 4.6 mm, Ea  
**Dimensions:** 75 x 4.6 mm ID  
**Order No:** 00C-4496-E0  
**Elution Type:** Gradient  
**Eluent A:** 0.96g 1-pentaesulfonic acid sodium salt in 1-L buffered to 3.00 with Phosphoric Acid  
**Eluent B:** Acetonitrile

Gradient Profile:	Step No.	Time (min)	Pct A	Pct B
	1	0	75	25
	2	20	50	50
	3	30	40	60
	4	35	30	70
	5	45	30	70
	6	50	75	25

**Flow Rate:** 1.2 mL/min  
**Col. Temp.:** ambient  
**Detection:** UV-Vis Abs.-Variable Wave.(UV) @ 254 nm (ambient)



Products used in this application:



### ANALYTES:

- 1 Loratadine related compound A
- 2 Loratadine related compound B
- 3 Loratadine

