

# HPLC Application

ID No.: 19573

## Tricyclic Antidepressant on Kinetex XB-18 by LC/MS/MS

**Column:** Kinetex® 2.6 µm XB-C18 100 Å, LC Column 50 x 2.1 mm, Ea

**Dimensions:** 50 x 2.1 mm ID

**Order No:** 00B-4496-AN

**Elution Type:** Gradient

**Eluent A:** 0.1% Aq Formic Acid

**Eluent B:** 100% Methanol

Gradient Profile:	Step No.	Time (min)	Pct A	Pct B
	1	0	85	15
	2	3	40	60
	3	4	40	60
	4	4.1	10	90
	5	5	10	90
	6	5.1	85	15

**Flow Rate:** 0.4 mL/min

**Col. Temp.:** ambient

**Detection:** Mass Spectrometer (MS) @ amu (ambient)

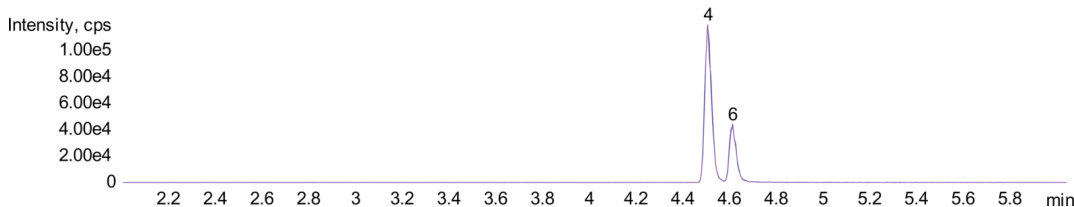
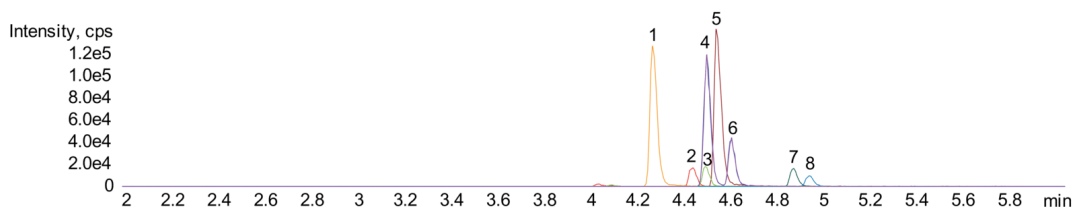
**Detector Info:** <a target="\_blank"

href="https://sciex.com/products/mass-spectrometers?utm\_campaign=2019%20application%20search&utm\_source=phenomenex&utm\_medium=referral">SCIEX<

19573



Products used in this application:



### ANALYTES:

- 1** Amoxapine  
Retention Time: 4.27 min
- 2** Imipramine  
Retention Time: 4.44 min
- 3** Desipramine  
Retention Time: 4.5 min
- 4** Protriptyline  
Retention Time: 4.5 min
- 5** Amitriptyline  
Retention Time: 4.54 min
- 6** Nortriptyline  
Retention Time: 4.61 min
- 7** Clomipramine  
Retention Time: 4.87 min
- 8** Desmethyl clomipramine  
Retention Time: 4.94 min

©2024 Phenomenex Inc. All rights reserved.

For more information contact your Phenomenex Representative at support@phenomenex.com



Phenomenex products are available worldwide.

[www.phenomenex.com](http://www.phenomenex.com)

[support@phenomenex.com](mailto:support@phenomenex.com)