

HPLC Application

ID No.: 19593

Kinetex SAMHSA LC/MS Run

Column: Kinetex® 2.6 µm C18 100 Å, LC Column 50 x 2.1 mm, Ea

Dimensions: 50 x 2.1 mm ID

Order No: 00B-4462-AN

Elution Type: Gradient

Eluent A: 0.1% Formic Acid

Eluent B: Acetonitrile

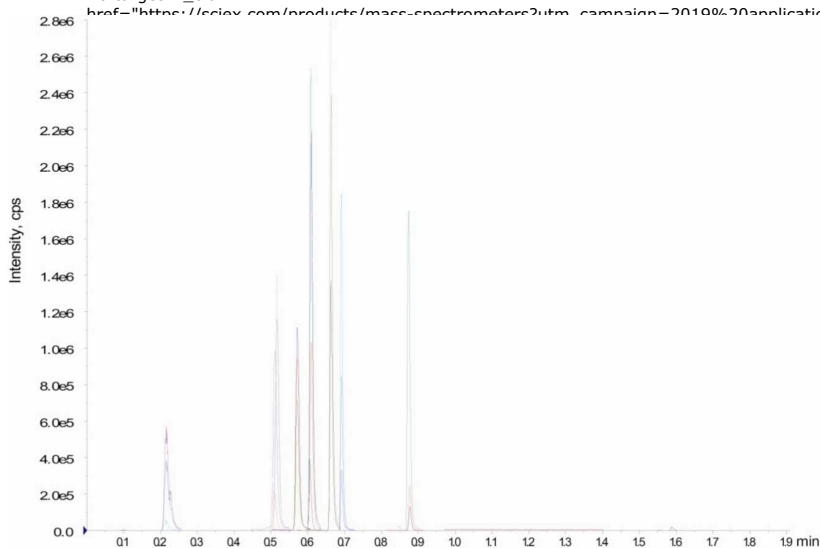
Gradient Profile:	Step No.	Time (min)	Pct A	Pct B
	1	0	95	5
	2	1.7	5	95
	3	1.9	5	95
	4	1.91	95	5

Flow Rate: 1.2 mL/min

Col. Temp.: ambient

Detection: Mass Spectrometer (MS) @ amu (ambient)

Detector Info: SCIEX<



Products used in this application:



Kinetex SAMHSA LC/MS Run

ANALYTES:

- 1 Morphine
- 2 Morphine-d3
- 3 Codeine
- 4 Codeine-d6
- 5 Amphetamine
- 6 Methamphetamine
- 7 MDA
- 8 MDA-d5
- 9 6-MAM
- 10 MAM-d3
- 11 MDMA
- 12 MDMA-d5
- 13 MDEA
- 14 MDEA-d5
- 15 Benzoylecgonine
- 16 Benzoylecgonine-d3
- 17 PCP
- 18 PCP-d5

