

## Carboxy-THC from urine using Strata-X-Drug B and Zebron Drug-1 10x0.18x0.18

**Column:** Zebron™ ZB-Drug-1, GC Cap. Column 10 m x 0.18 mm x 0.18 µm, Ea  
**Phase:** Proprietary Drug Phase  
**Dimensions:** 10 meters x 0.18 mm x 0.18 µm  
**Order No:** 7CD-G023-08  
**Oven Profile:** 220°C to 340°C @ 30°C/min

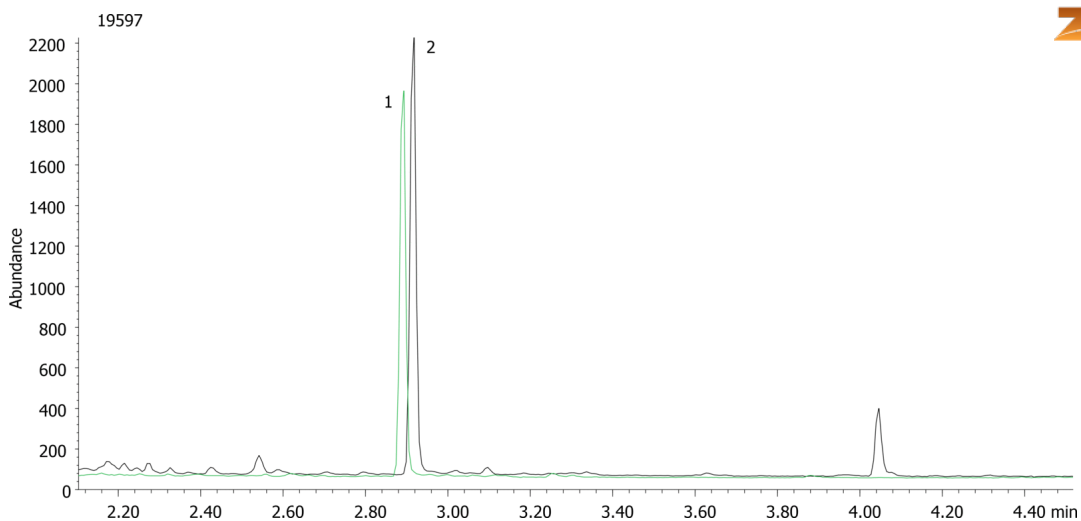
**Carrier Gas:** Constant Flow Helium, 0.7 mL/min  
**Injection:** Split 10:1 1 µL @ 280°C  
**Detection:** Mass Selective (MSD) (340°C)

**Analyst Note:** Analytes are spiked into blank urine @ the SAMSHA cutoff level of 15ng/mL.

After elution from SPE sorbent the sample is blown down and then derivatized with BSTFA by heating @ 70°C for 20min.



Products used in this application:



### ANALYTES:

- 1** Carboxy-THC-d9  
Retention Time: 2.9 min
- 2** Carboxy-THC  
Retention Time: 2.92 min

