

HPLC Application

ID No.: 19599

6-MAM by LC/MS/MS using Strata-X-Drug B and a Kinetex C18 2.6µm, 50x2.1mm

Column: Kinetex® 2.6 µm C18 100 Å, LC Column 50 x 2.1 mm, Ea

Dimensions: 50 x 2.1 mm ID

Order No: 00B-4462-AN

Elution Type: Gradient

Eluent A: 0.1% Formic acid

Eluent B: Acetonitrile

Gradient Profile:	Step No.	Time (min)	Pct A	Pct B
	1	0	90	10
	2	1	30	70
	3	3	30	70
	4	3	30	70

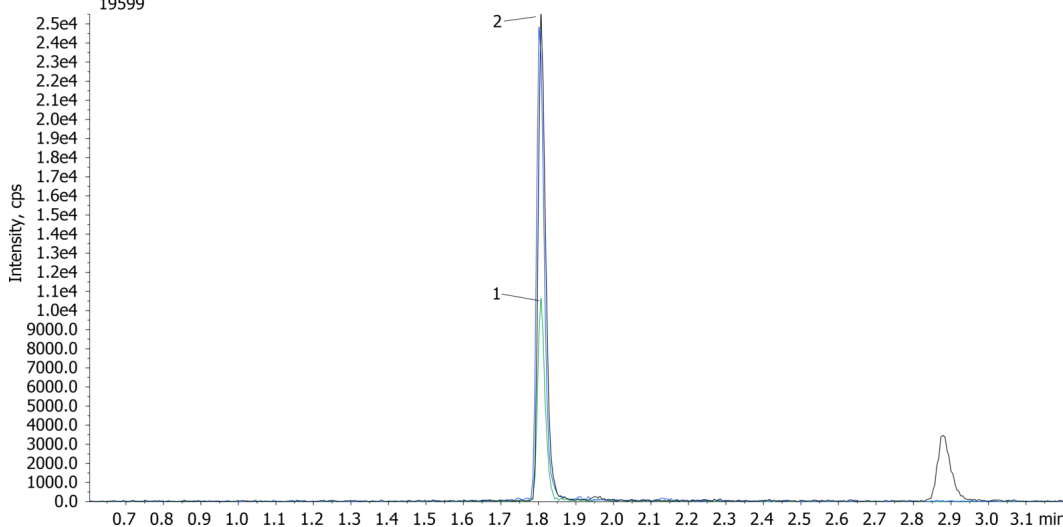
Flow Rate: 400 µL/min

Col. Temp.: ambient

Detection: Mass Spectrometer (MS) @ amu (ambient)



Products used in this application:



ANALYTES:

1 6-MAM-d3

Retention Time: 1.8 min

2 6-MAM

Retention Time: 1.8 min

