

GC Application

ID No.: 19600

Opiates from urine using Strata-X-Drug B and Zebron Drug-1 10x0.18x0.18

Column: Zebron[™] ZB-Drug-1, GC Cap. Column 10 m x 0.18 mm x 0.18 µm, Ea

Phase: Proprietary Drug Phase

Dimensions: 10 meters x 0.18 mm x 0.18 µm

Order No: 7CD-G023-08

Oven Profile: 185°C to 320°C @ 30°C/min. Hold 3.00 mins

Carrier Gas: Constant Flow Helium, 0.7 mL/min

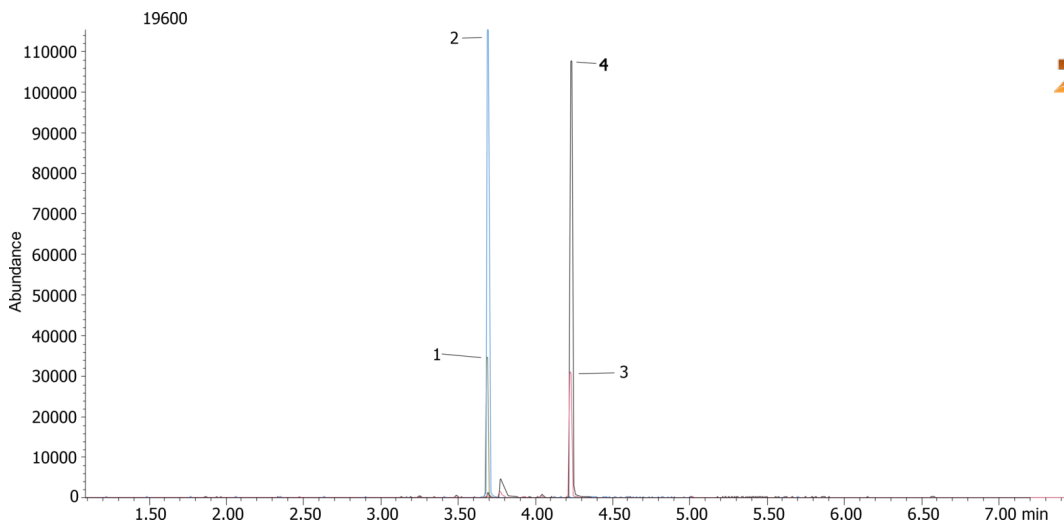
Injection: Split 20:1 1 µL @ 260°C

Detection: Mass Selective (MSD) (320°C)

Analyst Note: Analytes are spiked into urine @ SAMSHA cutoff level of 2000ng/mL



Products used in this application:



ANALYTES:

- 1 Codeine-d3
- 2 Codeine
- 3 Morphine-d3
- 4 Morphine

