

Ionic Surfactants in Sea Water by LC/MS/MS on Kinetex C8

Column: Kinetex® 2.6 µm C8 100 Å, LC Column 50 x 2.1 mm, Ea

Dimensions: 50 x 2.1 mm ID

Order No: 00B-4497-AN

Elution Type: Gradient

Eluent A: 5 mM Ammonium Acetate

Eluent B: 100% MeOH

Gradient Profile:	Step No.	Time (min)	Pct A	Pct B
	1	0	85	15
	2	1.5	15	85
	3	4	15	85
	4	4.1	5	95
	5	5	5	95
	6	5.01	85	15
	7	7	85	15



Products used in this application:

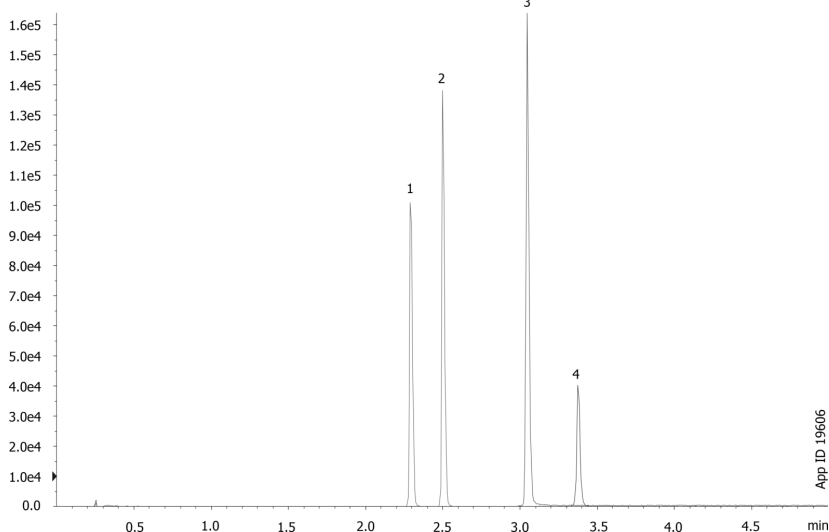


Flow Rate: 0.4 mL/min

Col. Temp.: ambient

Detection: Mass Spectrometer (MS) @ amu (ambient)

Detector Info: SCIEX



ANALYTES:

- 1** 1-Heptane Sulfonate
Retention Time: 2.29 min
- 2** 1-Octane Sulfonate
Retention Time: 2.5 min
- 3** 1-Dodecyl Sulfate
Retention Time: 3.05 min
- 4** bis(2-Ethylhexyl)sulfosuccinate
Retention Time: 3.38 min

