

# HPLC Application

ID No.: 19615

## Kinetex 100 x 2.1 QC with Modified 1100

**Column:** Kinetex<sup>®</sup> 2.6  $\mu$ m XB-C18 100 Å, LC Column 100 x 2.1 mm, Ea

**Dimensions:** 100 x 2.1 mm ID

**Order No:** 00D-4496-AN

**Elution Type:** Isocratic

**Eluent A:** Water

**Eluent B:** Acetonitrile

Gradient Profile:	Step No.	Time (min)	Pct A	Pct B
	1	0	35	65

**Flow Rate:** 0.5 mL/min

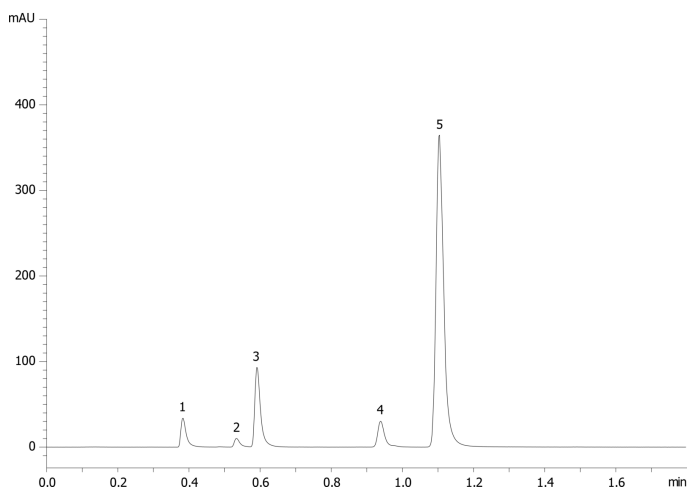
**Col. Temp.:** ambient

**Detection:** UV-Vis Abs.-Variable Wave.(UV) @ 254 nm (ambient)

19615



Products used in this application:



### ANALYTES:

- 1** Uracil  
Retention Time: 0.38 min
- 2** impurity  
Retention Time: 0.52 min
- 3** Acetophenone  
Retention Time: 0.592 min
- 4** Toluene  
Retention Time: 0.939 min
- 5** Naphthalene  
Retention Time: 1.104 min

