

HPLC Application

ID No.: 19644

Pantoprazole on Lux 5µm Cellulose-3 in RP

Column: Lux[®] 5 µm Cellulose-3, LC Column 250 x 4.6 mm, Ea

Dimensions: 250 x 4.6 mm ID

Order No: 00G-4493-E0

Elution Type: Isocratic

Eluent A: ACN / 20mM NH₄AC (20:80) None

Gradient	Step No.	Time (min)	Pct A
Profile:	1	0	100

Flow Rate: 1.5 mL/min

Col. Temp.: ambient

Detection: UV-Vis Abs.-Variable Wave.(UV) @ 254 nm (ambient)

Analyst Note: SecurityGuard[™] Guard Cartridge System extends column lifetime.

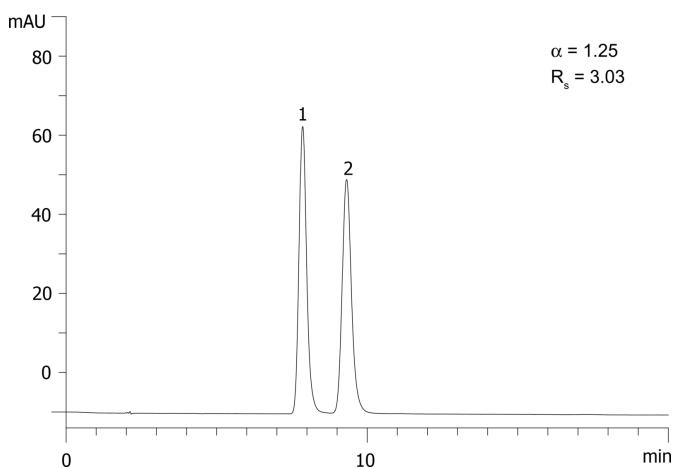
- SecurityGuard Cartridges, Lux Cellulose-3 4 x 3.0 mm, 10/Pk Part No.: AJ0-8622

- Holder Part No.: KJ0-4282

19644



Products used in this application:



ANALYTES:

- 1** Pantoprazole
Retention Time: 7.849 min
- 2** Pantoprazole
Retention Time: 9.311 min