

Clopidogrel Bisulfate on Lux 5µm Cellulose-3 in PO

Column: Lux® 5 µm Cellulose-3, LC Column 250 x 4.6 mm, Ea

Dimensions: 250 x 4.6 mm ID

Order No: 00G-4493-E0

Elution Type: Isocratic

Eluent A: MeOH (100%) DEA (0.1%)

Gradient Profile:	Step No.	Time (min)	Pct A
	1	0	100

Flow Rate: 1 mL/min

Col. Temp.: ambient

Detection: UV-Vis Abs.-Variable Wave.(UV) @ 220 nm (ambient)

Analyst Note: SecurityGuard™ Guard Cartridge System extends column lifetime.

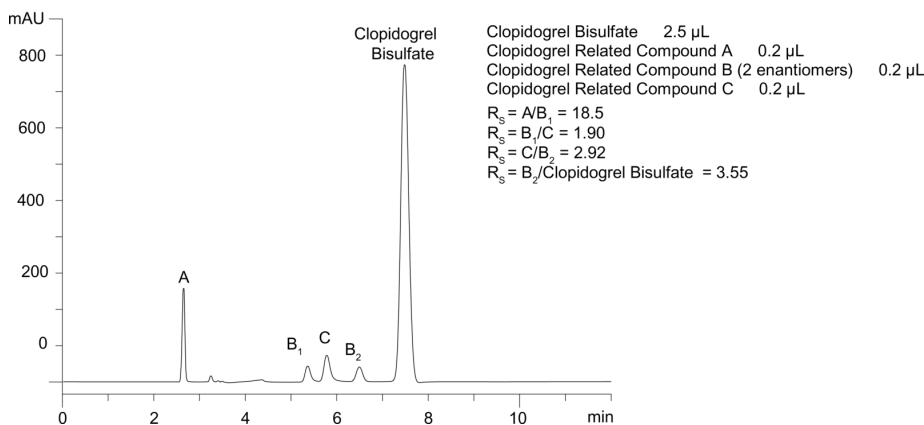
- SecurityGuard Cartridges, Lux Cellulose-3 4 x 3.0 mm, 10/Pk Part No.: AJ0-8622

- Holder Part No.: KJ0-4282

19646



Products used in this application:



ANALYTES:

- 1** Clopidogrel related compound A
Retention Time: 2.66 min
- 2** Clopidogrel related compound B1
Retention Time: 5.363 min
- 3** Clopidogrel related compound C
Retention Time: 5.781 min
- 4** Clopidogrel related compound B2
Retention Time: 6.494 min
- 5** Clopidogrel Bisulfate
Retention Time: 7.5 min

