

# HPLC Application

ID No.: 19647

## Solifenacin Succinate on Lux 5µm Cellulose-4 in PO

**Column:** Lux<sup>®</sup> 5 µm Cellulose-4, LC Column 250 x 4.6 mm, Ea

**Dimensions:** 250 x 4.6 mm ID

**Order No:** 00G-4491-E0

**Elution Type:** Isocratic

**Eluent A:** ACN (100%) DEA (0.1%)

| Gradient        | Step No. | Time (min) | Pct A |
|-----------------|----------|------------|-------|
| <b>Profile:</b> | <b>1</b> | 0          | 100   |

**Flow Rate:** 2 mL/min

**Col. Temp.:** ambient

**Detection:** UV-Vis Abs.-Variable Wave.(UV) @ 220 nm (ambient)

**Analyst Note:** SecurityGuard<sup>™</sup> Guard Cartridge System extends column lifetime.

- SecurityGuard Cartridges, Lux Cellulose-4 4 x 3.0 mm, 10/Pk Part No.: AJ0-8627

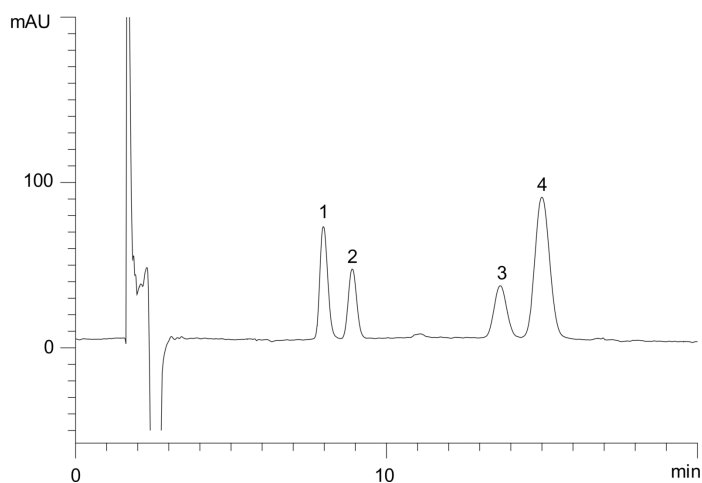
- Holder Part No.: KJ0-4282



Products used in this application:



19647



### ANALYTES:

**1** Solifenacin succinate

Retention Time: 7.969 min

**2** Solifenacin succinate

Retention Time: 8.898 min

**3** Solifenacin succinate

Retention Time: 13.661 min

**4** Solifenacin succinate

Retention Time: 14.998 min

