

# HPLC Application

ID No.: 19655

## Fluoroquinolones by LCMS using Kinetex C8 2.6µm, 50 x 2.1 mm

**Column:** Kinetex® 2.6 µm C8 100 Å, LC Column 50 x 2.1 mm, Ea

**Dimensions:** 50 x 2.1 mm ID

**Order No:** 00B-4497-AN

**Elution Type:** Gradient

**Eluent A:** 0.1% Formic acid

**Eluent B:** Methanol

| Gradient Profile: | Step No. | Time (min) | Pct A | Pct B |
|-------------------|----------|------------|-------|-------|
|                   | 1        | 0          | 85    | 15    |
|                   | 2        | 5          | 10    | 90    |
|                   | 3        | 6          | 10    | 90    |
|                   | 4        | 6          | 10    | 90    |

**Flow Rate:** 0.4 mL/min

**Col. Temp.:** 40 °C

**Detection:** Mass Spectrometer (MS) @ amu (550 °C)

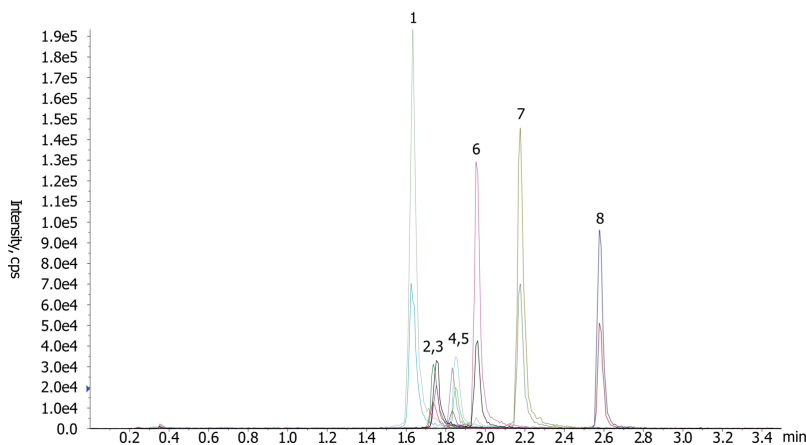
**Detector Info:** <a target="\_blank"

**Analyst Note:** href="https://sciex.com/products/mass-spectrometers?utm\_campaign=2019%20application%20search&utm\_source=phenomenex&utm\_medium=referral">SCIEX<

Source temp: 550°C  
Polarity: Postive  
Dwell: 25 msec  
19655



Products used in this application:



### ANALYTES:

- 1 Ofloxacin
- 2 Norfloxacin
- 3 Norfloxacin-d5
- 4 Ciprofloxacin
- 5 Ciprofloxacin-d8
- 6 Enrofloxacin
- 7 Difloxacin
- 8 Sparfloxacin

