

## LC/MS/MS Analysis of Ethyl Glucuronide and Ethyl Sulfate on Gemini NX-C18

**Column:** Gemini® 3 µm NX-C18 110 Å, LC Column 100 x 2 mm, Ea

**Dimensions:** 100 x 2 mm ID

**Order No:** 00D-4453-B0

**Elution Type:** Gradient

**Eluent A:** 5 mM Ammonium Formate

**Eluent B:** Methanol

Gradient Profile:	Step No.	Time (min)	Pct A	Pct B
	1	0	98	2
	2	1	54	46
	3	1.01	20	80
	4	2	0	100

**Flow Rate:** 300 µL/min

**Col. Temp.:** 25 °C

**Detection:** Mass Spectrometer (MS) @ amu (ambient)

**Analyst Note:** SecurityGuard™ Guard Cartridge System extends column lifetime.

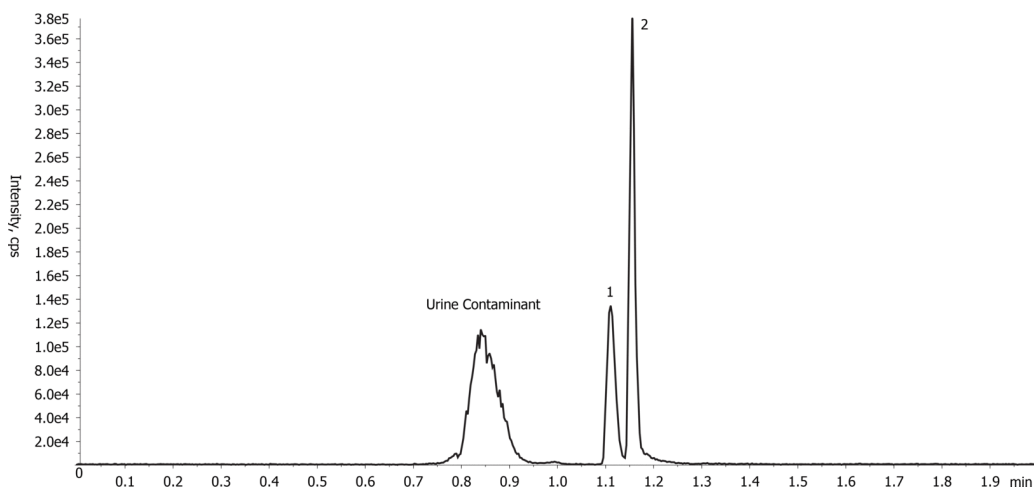
- SecurityGuard Cartridges, C18 4 x 2.0mm ID, 10/Pk Part No.: AJ0-4286

- Holder Part No.: KJ0-4282

App 19686



Products used in this application:



### ANALYTES:

1 Ethyl glucuronide

Retention Time: 1.11 min

2 Ethyl sulfate

Retention Time: 1.15 min

