

# HPLC Application

ID No.: 19704

## LC/MS/MS Analysis of Propoxyphene from urine using Strata-X-Drug B on a Kinetex C18 2.6µm, 50x2.1mm

**Column:** Kinetex® 2.6 µm C18 100 Å, LC Column 50 x 2.1 mm, Ea

**Dimensions:** 50 x 2.1 mm ID

**Order No:** 00B-4462-AN

**Elution Type:** Gradient

**Eluent A:** 0.1% Formic acid

**Eluent B:** 0.1% Formic acid in acetonitrile

Gradient Profile:	Step No.	Time (min)	Pct A	Pct B
	1	0	60	40
	2	3.5	0	100
	3	3.51	60	40
	4	6.5	60	40

**Flow Rate:** 400 µL/min

**Col. Temp.:** ambient

**Detection:** Mass Spectrometer (MS) @ amu (ambient)

**Detector Info:** <a target="\_blank"

href="https://sciex.com/products/mass-spectrometers?utm\_campaign=2019%20application%20search&utm\_source=phenomenex&utm\_medium=referral">SCIEX<

Source: Cur-11, CAD-12, IS-4500, Tem-450, NEB-12

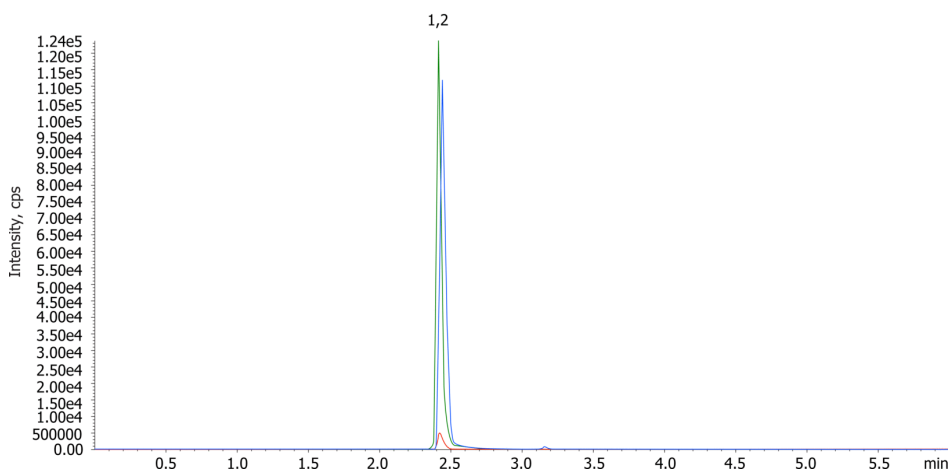
Dwell: 25ms

Polarity: Positive

19704



Products used in this application:



### ANALYTES:

1 Propoxyphene-d11

Retention Time: 2.45 min

2 Propoxyphene

Retention Time: 2.45 min



# Sample Preparation Details

for HPLC Application ID No.: 19704

## LC/MS/MS Analysis of Propoxyphene from urine using Strata-X-Drug B on a Kinetex C18 2.6µm, 50x2.1mm

### PRODUCT DESCRIPTION:

Strata<sup>™</sup>-X-Drug B 33 µm Polymeric Strong Cation, 60 mg / 6 mL, Tubes , 30/Pk

Order No.: 8B-S128-UCH

### SOLID PHASE EXTRACTION (SPE) PROCEDURE:

**Note:** The solvent volumes shown below are for a 60 mg bed mass.

The solvent volumes will need to be adjusted for a smaller or larger bed mass.

#### Condition:

---

#### Load:

---

#### Wash:

---

#### Dry:

---

10 minutes @ full vacuum

#### Elute:

---

### Final Prep and Analysis:

---

Evaporate to dryness under a stream of nitrogen at 50 C . Reconstitute in 1 mL of 40% acetonitrile.

Inject: 0 µL on HPLC Mass Spectrometer (MS) @ amu (ambient)

<b>ANALYTES:</b>	<b>Spiked Conc. (ng/mL)</b>	<b>Log P</b>	<b>pKa</b>	<b>% Rec</b>	<b>%RSC (n=0)</b>
1 Propoxyphene-d11	300			100	
2 Propoxyphene	300			99.21	

**Note:** This method is designed as a convenient starting point for further investigation and can be tailored to meet your extraction goals. Call your local Phenomenex Representative for assistance in method development and optimization techniques.

©2024 Phenomenex Inc. All rights reserved.

For more information contact your Phenomenex Representative at support@phenomenex.com



Phenomenex products are available worldwide.

[www.phenomenex.com](http://www.phenomenex.com)

[support@phenomenex.com](mailto:support@phenomenex.com)