

HPLC Application

ID No.: 19717

Pantoprazole on Lux Cellulose 2 in RP

Column: Lux[®] 5 µm Cellulose-2, LC Column 250 x 4.6 mm, Ea

Dimensions: 250 x 4.6 mm ID

Order No: 00G-4457-E0

Elution Type: Isocratic

Eluent A: Acetonitril

Eluent B: 10mM Ammonium Bicarbonate

Gradient Profile:	Step No.	Time (min)	Pct A	Pct B
	1	0	60	40

Flow Rate: 1 mL/min

Col. Temp.: ambient

Detection: UV-Vis Abs.-Variable Wave.(UV) @ 220 nm (ambient)

Analyst Note: SecurityGuard[™] Guard Cartridge System extends column lifetime.

- SecurityGuard Cartridges, Lux Cellulose-2, 4 x 3.0mm ID, 10/Pk Part No.: AJ0-8366

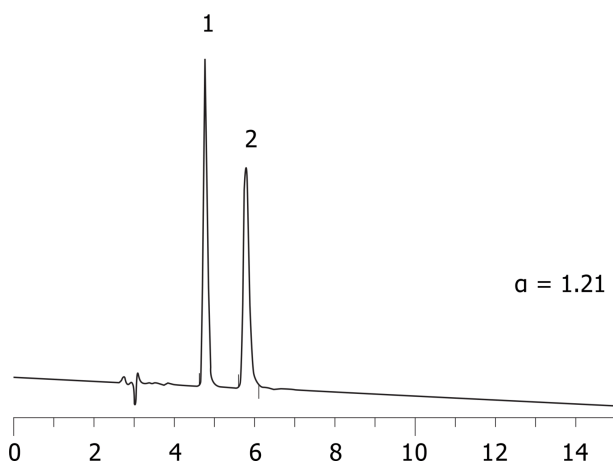
- Holder Part No.: KJ0-4282



Products used in this application:



19717



ANALYTES:

- 1** Pantoprazole
Retention Time: 4.77 min
- 2** Pantoprazole
Retention Time: 5.78 min