

HPLC Application

ID No.: 19721

Omeprazole (Prilosec) on Lux Cellulose-2 in Reversed Phase

Column: Lux[®] 5 μ m Cellulose-2, LC Column 250 x 4.6 mm, Ea

Dimensions: 250 x 4.6 mm ID

Order No: 00G-4457-E0

Elution Type: Isocratic

Eluent A: Acetonitrile + 0.1% DEA

Eluent B: 20 mM Ammonium Bicarbonate + 0.1% DEA

Gradient Profile:	Step No.	Time (min)	Pct A	Pct B
	1	0	80	20

Flow Rate: 1 mL/min

Col. Temp.: ambient

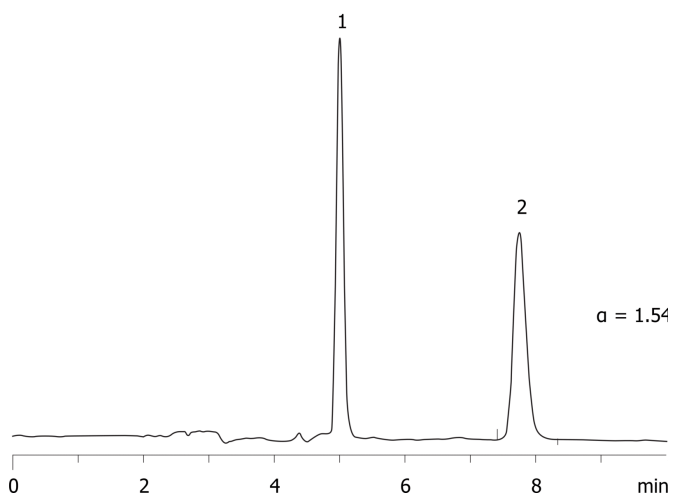
Detection: UV-Vis Abs.-Variable Wave.(UV) @ 220 nm (ambient)

Analyst Note: SecurityGuard[™] Guard Cartridge System extends column lifetime.

- SecurityGuard Cartridges, Lux Cellulose-2, 4 x 3.0mm ID, 10/Pk Part No.: AJ0-8366

- Holder Part No.: KJ0-4282

19721



ANALYTES:

1 Omeprazole

Retention Time: 5.011 min

2 Omeprazole

Retention Time: 7.74 min



Products used in this application:

