

Water soluble vitamins on Luna HILIC by LC/MS/MS

Column: Luna® 3 µm HILIC 200 Å, LC Column 100 x 2 mm, Ea

Dimensions: 100 x 2 mm ID

Order No: 00D-4449-B0

Elution Type: Gradient

Eluent A: 60%ACN:40% 100 mM Ammonium Formate, pH 3.2

Eluent B: 90:ACN:10% 100 mM Ammonium Formate, pH 3.2

Gradient Profile:	Step No.	Time (min)	Pct A	Pct B
	1	0	0	100
	2	5	0	100
	3	5.1	100	0
	4	7	100	0
	5	7.1	0	100

Flow Rate: 0.5 mL/min

Col. Temp.: ambient

Detection: Mass Spectrometer (MS) @ amu (ambient)

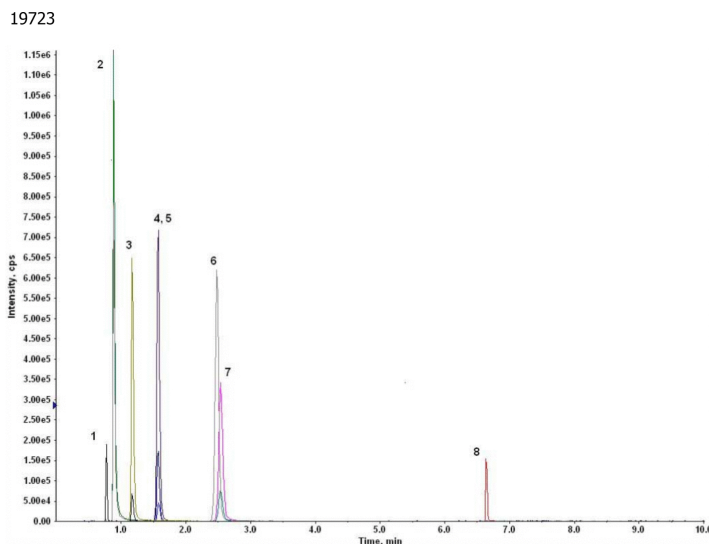
Detector Info: <a target="_blank"

Analyst Note: href="https://sciex.com/products/mass-spectrometers?utm_campaign=2019%20application%20search&utm_source=phenomenex&utm_medium=referral">SCIEX< SecurityGuard™ Guard Cartridge System extends column lifetime.

- SecurityGuard Cartridges, HILIC 4 x 2.0mm ID, 10/PK Part No.: AJ0-8328
- Holder Part No.: KJ0-4282



Products used in this application:



ANALYTES:

- 1 Nicotinamide**
Retention Time: 0.78 min
- 2 Pyridoxine**
Retention Time: 0.89 min
- 3 Riboflavin**
Retention Time: 1.17 min
- 4 Thiamine**
Retention Time: 1.57 min
- 5 Biotin**
Retention Time: 1.58 min
- 6 Nicotinic acid**
Retention Time: 2.48 min
- 7 Pantothenic acid**
Retention Time: 2.54 min
- 8 Folic acid**
Retention Time: 6.64 min

©2024 Phenomenex Inc. All rights reserved.

For more information contact your Phenomenex Representative at support@phenomenex.com

Phenomenex products are available worldwide.