

HPLC Application

ID No.: 19732

Rabeprazole on Lux Cellulos-4 RP Screen

Column: Lux[®] 5 µm Cellulose-4, LC Column 150 x 4.6 mm, Ea

Dimensions: 150 x 4.6 mm ID

Order No: 00F-4491-E0

Elution Type: Isocratic

Eluent A: 10mM AmmBicarb + 0.1%DEA

Eluent B: Methanol + 0.1%DEA

Gradient Profile:	Step No.	Time (min)	Pct A	Pct B
	1	0	20	80

Flow Rate: 1.5 mL/min

Col. Temp.: ambient

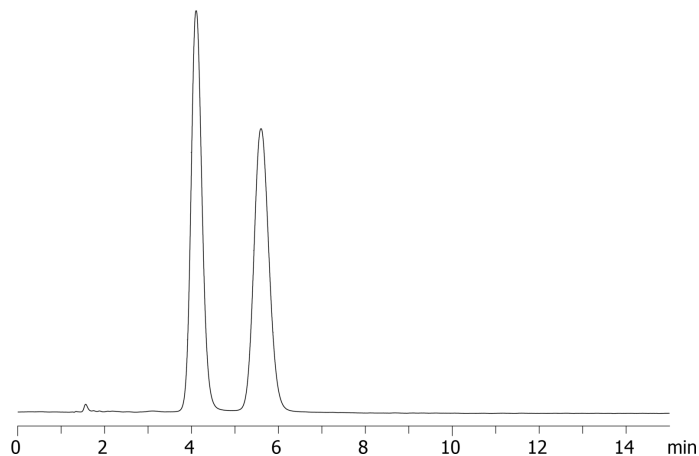
Detection: UV-Vis Abs.-Variable Wave.(UV) @ 286 nm (ambient)

Analyst Note: SecurityGuard[™] Guard Cartridge System extends column lifetime.

- SecurityGuard Cartridges, Lux Cellulose-4 4 x 3.0 mm, 10/Pk Part No.: AJ0-8627

- Holder Part No.: KJ0-4282

19732



ANALYTES:

1 Rabeprazole



Products used in this application:

