

EtG and EtS Standards in Urine by LC/MS/MS

Column: Synergi™ 2.5 µm Hydro-RP 100 Å, LC Column 100 x 3 mm, Ea

Dimensions: 100 x 3 mm ID

Order No: 00D-4387-Y0

Elution Type: Gradient

Eluent A: 10 mM Ammonium formate

Eluent B: 50:50 Methanol:Acetonitrile

| Gradient Profile: | Step No. | Time (min) | Pct A | Pct B |
|-------------------|----------|------------|-------|-------|
| | 1 | 0 | 100 | 0 |
| | 2 | 4 | 20 | 80 |
| | 3 | 4.1 | 100 | 0 |
| | 4 | 7 | 100 | 0 |

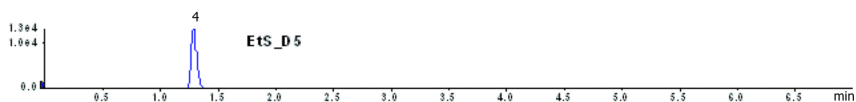
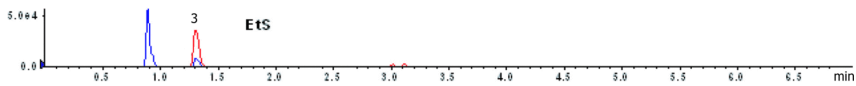
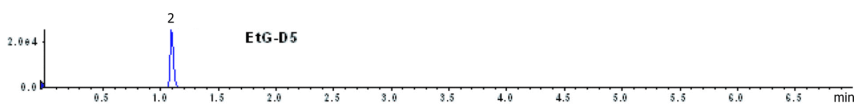
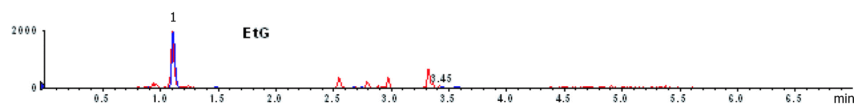
Flow Rate: 500 µL/min

Col. Temp.: ambient

Detection: Mass Spectrometer (MS) @ amu (ambient)

Detector Info: SCIEX<

19749



ANALYTES:

- 1 EtG (Ethyl glucuronide)
Retention Time: 1.1 min
- 2 Ethyl glucuronide-d5 (EtG-d5)
Retention Time: 1.1 min
- 3 EtS (Ethyl sulfate)
Retention Time: 1.3 min
- 4 EtS (Ethyl sulfate)
Retention Time: 1.3 min

