

EtG and EtS in Urine by LC/MS/MS

Column: Synergi™ 2.5 µm Hydro-RP 100 Å, LC Column 100 x 3 mm, Ea

Dimensions: 100 x 3 mm ID

Order No: 00D-4387-Y0

Elution Type: Gradient

Eluent A: 10 mM Ammonium formate

Eluent B: 50:50 Methanol:Acetonitrile

Gradient Profile:	Step No.	Time (min)	Pct A	Pct B
	1	0	100	0
	2	4	20	80
	3	4.1	100	0
	4	7	100	0

Flow Rate: 500 µL/min

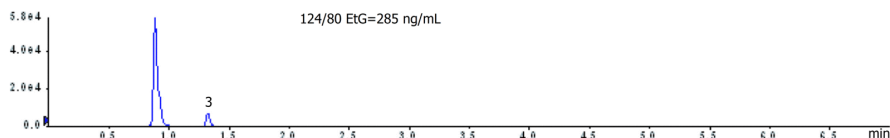
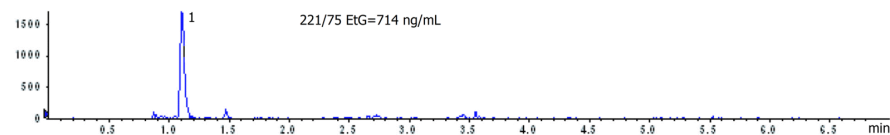
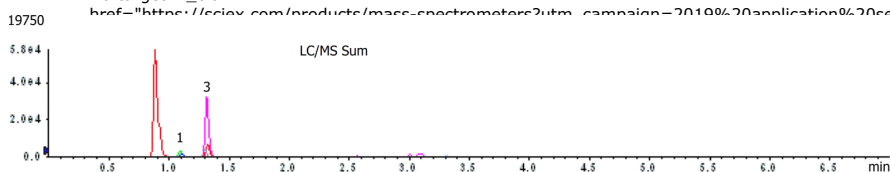
Col. Temp.: ambient

Detection: Mass Spectrometer (MS) @ amu (ambient)

Detector Info:

<a target="_blank"

href="https://sciex.com/products/mass-spectrometers?utm_campaign=2019%20application%20research&utm_source=phenomenex&utm_medium=referral">SCIEX<



ANALYTES:

- 1 EtG (Ethyl glucuronide)
Retention Time: 1.1 min
- 2 Ethyl glucuronide-d5 (EtG-d5)
Retention Time: 1.1 min
- 3 EtS (Ethyl sulfate)
Retention Time: 1.3 min
- 4 EtS (Ethyl sulfate)
Retention Time: 1.3 min

