

# HPLC Application

ID No.: 19753

## Hop acids on Kinetex C18 2.6µm, 150x4.6 mm

**Column:** Kinetex® 2.6 µm C18 100 Å, LC Column 150 x 4.6 mm, Ea

**Dimensions:** 150 x 4.6 mm ID

**Order No:** 00F-4462-E0

**Elution Type:** Isocratic

**Eluent A:** 0.1% Phosphoric acid

**Eluent B:** Acetonitrile

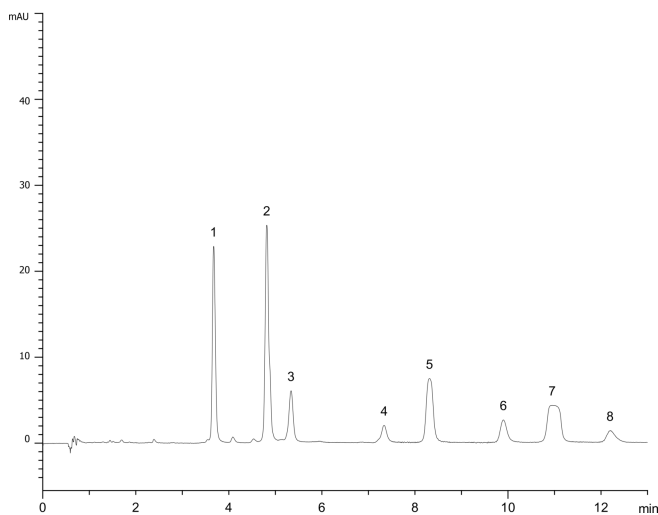
Gradient Profile:	Step No.	Time (min)	Pct A	Pct B
	1	0	40	60

**Flow Rate:** 1.8 mL/min

**Col. Temp.:** ambient

**Detection:** UV-Vis Abs.-Variable Wave.(UV) @ 270 nm (ambient)

AppID 19753



### ANALYTES:

- 1 Iso-cohumulone
- 2 Isohumulone
- 3 Isoadhumulone
- 4 trans-Tetrahydroisocohumulone
- 5 cis-Tetrahydroisocohumulone
- 6 trans-Tetrahydroisohumulone
- 7 cis-Tetrahydroisohumulone
- 8 Tetrahydroisoadhumulone



Products used in this application:

