

# HPLC Application

ID No.: 19773

## EtS EtG Sample #3 medium levels

**Column:** Synergi™ 2.5 µm Hydro-RP 100 Å, LC Column 100 x 3 mm, Ea

**Dimensions:** 100 x 3 mm ID

**Order No:** 00D-4387-Y0

**Elution Type:** Gradient

**Eluent A:** 10mM Ammonium formate

**Eluent B:** 50:50 Methanol: Acetonitrile

Gradient Profile:	Step No.	Time (min)	Pct A	Pct B
	1	0	100	0
	2	4	20	80
	3	4.1	100	0
	4	7	100	0

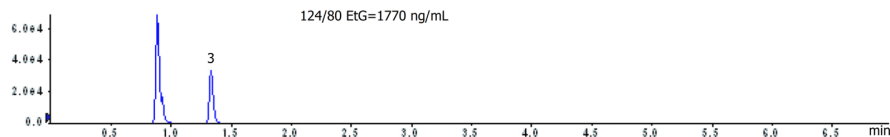
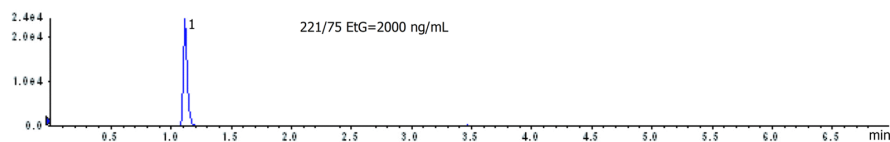
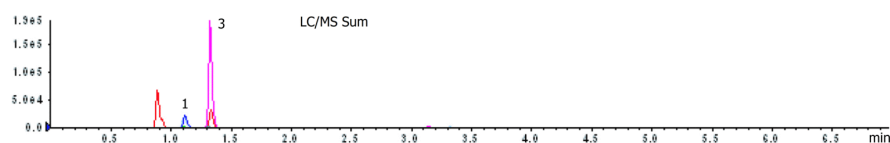
**Flow Rate:** 0.5 mL/min

**Col. Temp.:** ambient

**Detection:** Mass Spectrometer (MS) @ amu (ambient)

**Detector Info:** <a target="\_blank" href="https://sciex.com/products/mass-spectrometers?utm\_campaign=2019%20application%20research&utm\_source=phenomenex&utm\_medium=referral">SCIEEX<

19773



### ANALYTES:

- 1 EtG (Ethyl glucuronide)
- 2 Ethyl glucuronide-d5 (EtG-d5)
- 3 EtS (Ethyl sulfate)
- 4 EtS (Ethyl sulfate)

