

## Kinetex 1.7u XB-C18 30x2.1mm: Peak capacity test on Shimadzu Nexera

**Column:** Kinetex® 1.7 µm XB-C18 100 Å, LC Column 30 x 2.1 mm, Ea

**Dimensions:** 30 x 2.1 mm ID

**Order No:** 00A-4498-AN

**Elution Type:** Gradient

**Eluent A:** Water

**Eluent B:** Acetonitrile

Gradient Profile:	Step No.	Time (min)	Pct A	Pct B
	1	0	98	2
	2	0.4	2	98
	3	0.53	2	98

**Flow Rate:** 3 mL/min

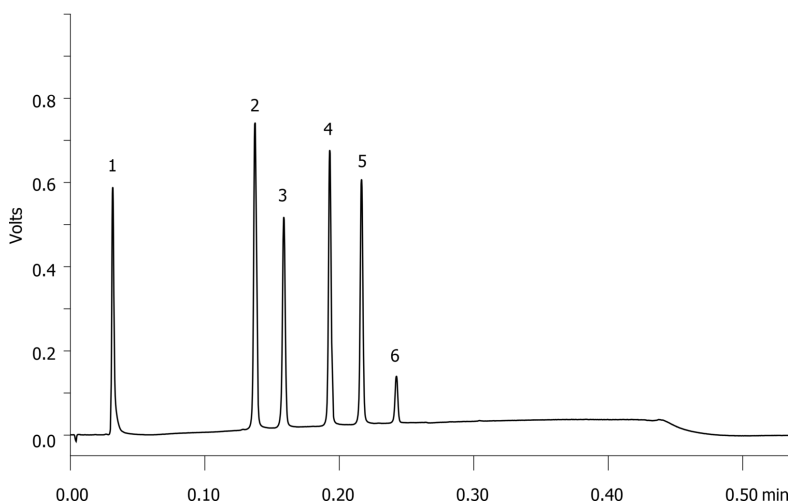
**Col. Temp.:** ambient

**Detection:** UV-Vis Abs.-Variable Wave.(UV) @ 254 nm (ambient)

**Detector Info:** Micro cell, 100Hz, no filter  
19803



Products used in this application:



### ANALYTES:

- 1 Uracil
- 2 Methyl paraben
- 3 Acetophenone
- 4 Propyl paraben
- 5 Butyl paraben
- 6 Naphthalene

